

DEPARTMENT OF TRANSPORT

061

QUEENSLAND RAILWAYS



COUNTRY TIMETABLE

EFFECTIVE JULY 31, 1990

125th
Anniversary

COMMEMORATIVE ISSUE \$5.00

BIG

hauling the load of more than fifty semis

MODERN

with current rollingstock and an on-going commitment to upgrade terminal and handling facilities

VERSATILE

with specially designed wagons for most types of freight

FREIGHTTRAIN

The biggest freight operation in Queensland! And now that the Brisbane to Rockhampton line is electric, Freighttrains can haul much larger loads, faster.

Most freight is automatically insured to prescribed limits and additional cover can be arranged. So when you want real value for your freight dollars, contact your nearest Freight Terminal or phone our freight advisors on (07) 235 3114 or 008 177 780.



It is with a great deal of pride and satisfaction that Queensland Railways issues this special Traveltrain timetable marking its 125th anniversary of service to the people of Queensland.

The histories of Queensland Railways and that of this State have been very much interwoven because in a very real sense the Railways opened up this vast State for settlement.

Proposals to establish a railway in Queensland were first raised a few years before Queensland became a self-governing colony of the British Empire in 1859, and subsequently in 1863 the first Railway Bill was presented to Parliament.

The first section of 3'6" gauge (1067mm) was opened from Ipswich to Bigge's Camp, a distance of 21½ miles (35km), on 31 July 1865. Construction continued westward to the fertile Darling Downs, reaching Dalby in 1868 and Warwick in 1871.

The further development of railways throughout Queensland proceeded at a hectic pace, providing an effective means of transport and satisfying the demands of agricultural, pastoral and political interests.

The first 60 years saw almost continuous expansion and by 1930 a massive network of 6400 miles (10,200km) had been developed.

Patronage on our long-distance trains increased to record levels during World War II, when Queensland Railways was confronted with a huge logistical task in support of the Pacific War.

The Railway's war effort reached its peak in 1942-43. In that year, Queensland Railways earned a staggering £17.1 million for a surplus of £4.6 million.

This represented an increase of more than 250 per cent in business in just three years, and reflects the capacity of a railway system and the magnitude of the Railway's wartime effort.

Lack of essential maintenance during the war years and almost no rollingstock replacement required not only rebuilding, but replanning as well.

An important development in this direction was the placement of orders for diesel-electric locomotives in 1951. This form of traction, offering speedier services and cuts in operating costs, had been tried successfully overseas.

The introduction of a new generation of trains featuring diesel locomotives and steel air-conditioned carriages in 1952 marked a major advance in passenger comfort. These trains were used for services between Brisbane-Cairns and the major western routes.

By the mid-1950's Queensland Railways was facing greatly increased competition from motor transport, especially from private vehicles whose numbers were to escalate rapidly into the 1960's and beyond.

As a result demand decreased dramatically and many passenger services were withdrawn.

Nevertheless, Queensland Railways continued to upgrade its long-distance passenger services.

Innovations included the introduction of The Capricornian passenger train, with stainless steel carriages, between Brisbane and Rockhampton in 1970; and the extension of showers to sitting cars between Brisbane and Cairns from 1981.

Our premier train, The Queenslander, quickly established a fine reputation with travellers, when introduced in April, 1986. Its restaurant and lounge car facilities, in particular, were widely recognised as the best provided by an Australian railway system.

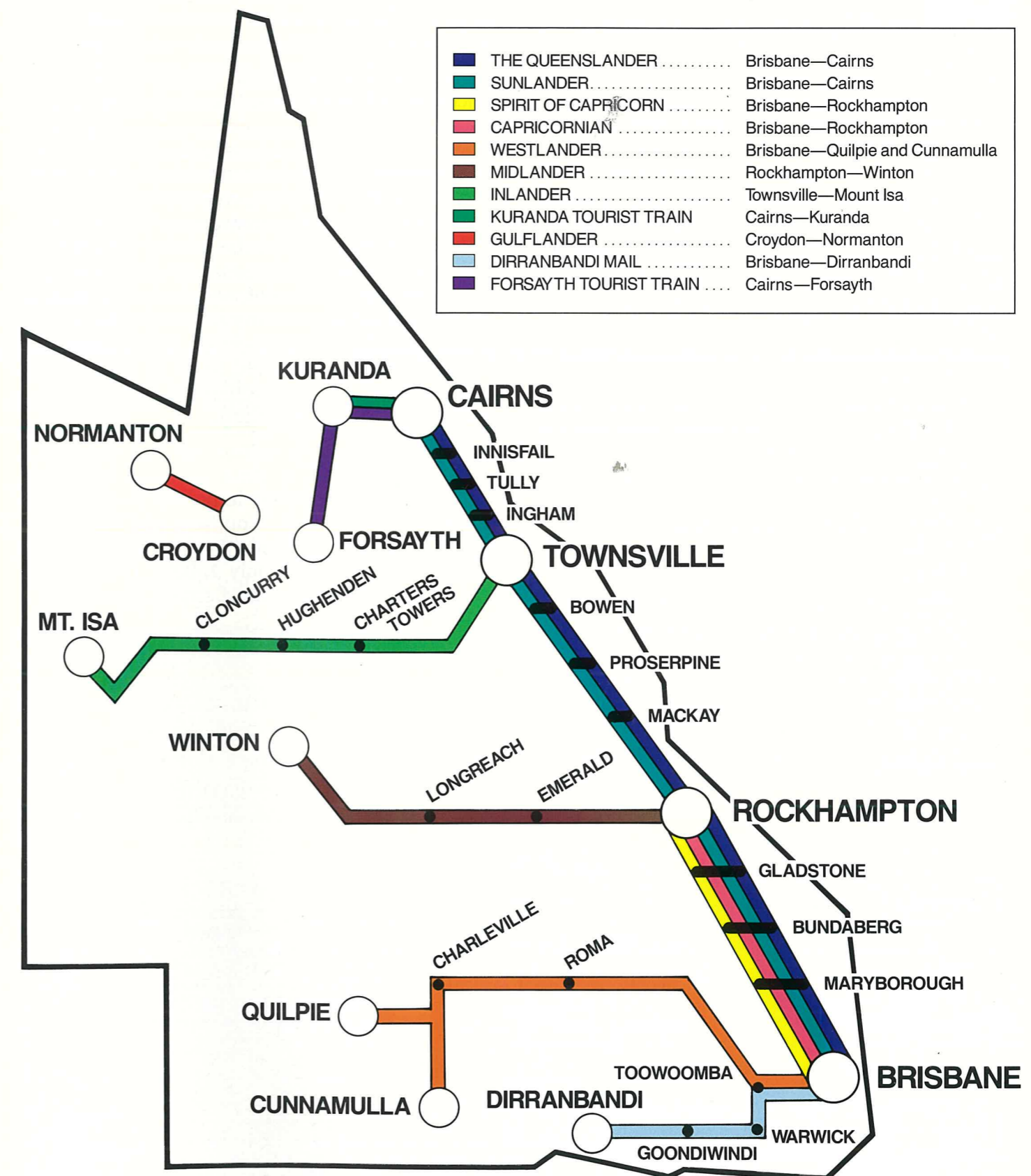
Undoubtedly one of our most successful trains has been The Spirit of Capricorn, the sit-up electric service introduced between Brisbane and Rockhampton in July, 1989. The popularity of the Spirit — which is primarily responsible for an increase of 90 per cent in patronage on the Brisbane/Rockhampton corridor — clearly demonstrates the public will support fast, comfortable long-distance rail travel.

Other positive trends include the continuing strong patronage on the Kuranda Tourist train, and the boom in passenger bookings for the Midlander Services from Rockhampton to Longreach, home of the top tourist attraction "The Hall of Fame".

It is heartening that 125 years since that first passenger train ran from Ipswich, Queensland Railways is still fulfilling a vital role in Queensland's passenger transport sector. Happy Traveltraining!

Robin Read,
Acting Commissioner for Railways.

	Page
Foreword.....	1
Traveltrain, Tourist Train Route Map	3
History of Queensland Railways	4&5
Historical Photos	6-9
The Queenslander	10
The Spirit of Capricorn.....	11
Timetables and Travel Facilities	
<i>The Queenslander</i>	12,13
<i>The Sunlander</i>	14,15
<i>The Spirit of Capricorn</i>	16,17
<i>The Capricornian</i>	18,19
<i>The Westlander</i>	20,21
<i>The Midlander</i>	22,23
<i>The Inlander</i>	24,25
<i>The Dirranbandi Mail</i>	26,27
<i>The Gulflander</i>	30
<i>Cairns to Kuranda</i>	31
<i>Cairns to Forsayth</i>	32
<i>Regional Rail Motors</i>	33
Conditions for Seat and	
Sleeping Berth Reservations	34,35
Quick Reference Traveltrain Timetables	36,37
Sunshine Rail Experience.....	38
Interstate Timetables	
<i>Brisbane-Sydney</i>	39-41
<i>Sydney-Melbourne</i>	42,43
<i>Melbourne-Adelaide (The Overland)</i>	44,45
<i>Sydney-Perth (The Indian-Pacific)</i>	46,47
<i>Adelaide-Perth (The Trans Australian)</i>	48,49
<i>Melbourne-Canberra</i>	50,51
<i>Sydney-Canberra</i>	50,51
<i>Adelaide-Alice Springs (The Ghan)</i>	52,53
By-Laws in Brief.....	54
Points for Rail Users	54
Principal Officers and Locations	55
Reservations.....	55



Take it easy. Take a **Traveltrain**

A BRIEF HISTORY OF QUEENSLAND RAILWAYS

Proposals to establish a railway in Queensland were first raised a few years before Queensland became a self-governing colony of the British Empire in 1859, and subsequently, in 1863, the first Railway Bill was presented to Parliament.

After much controversy, Queensland's first section of 3'6" gauge (1067mm) "Southern and Western Railway" was opened from Ipswich (the then head of navigation on the Bremer River) to Bigge's Camp, a distance of 21½ miles (35km), on 31 July 1865. Construction continued westward to the fertile Darling Downs, reaching Dalby in 1868 and Warwick in 1871.

The further development of railways throughout Queensland proceeded at a hectic pace, providing an effective means of transport to satisfy the demands of agricultural, pastoral, mining and political interests. Of the railways destined to become the main western trunk lines, the "Northern Railway" commenced operating from Rockhampton in 1867, and the "Great Northern Railway" from Townsville in 1880. By 1890, there were no less than eleven separate and isolated railways existing in Queensland.

In 1888, the principal rail link between the colonies of New South Wales and Queensland was established when the New South Wales and Queensland railways met at the border town of Wallangarra (Jennings), and remained so until 1930 when the uniform 4'8½" (1435mm) gauge line from Brisbane to Sydney via Kyogle was opened.

Expansion

Whilst most railways in Queensland were vested in Government, several private lines had been constructed. In 1910, the Government seized upon the need for a complete "North Coast Line" between Brisbane and Cairns, connecting all but two of the isolated railways, and several of these private lines were absorbed under this scheme. However, the complete line was not achieved until 1924 when construction of the remaining sections was completed.

The first sixty years saw almost continual expansion and construction activity in the system, and by 1930 when this phase climaxed, a massive network of 6460 miles (10,400km) had been developed.

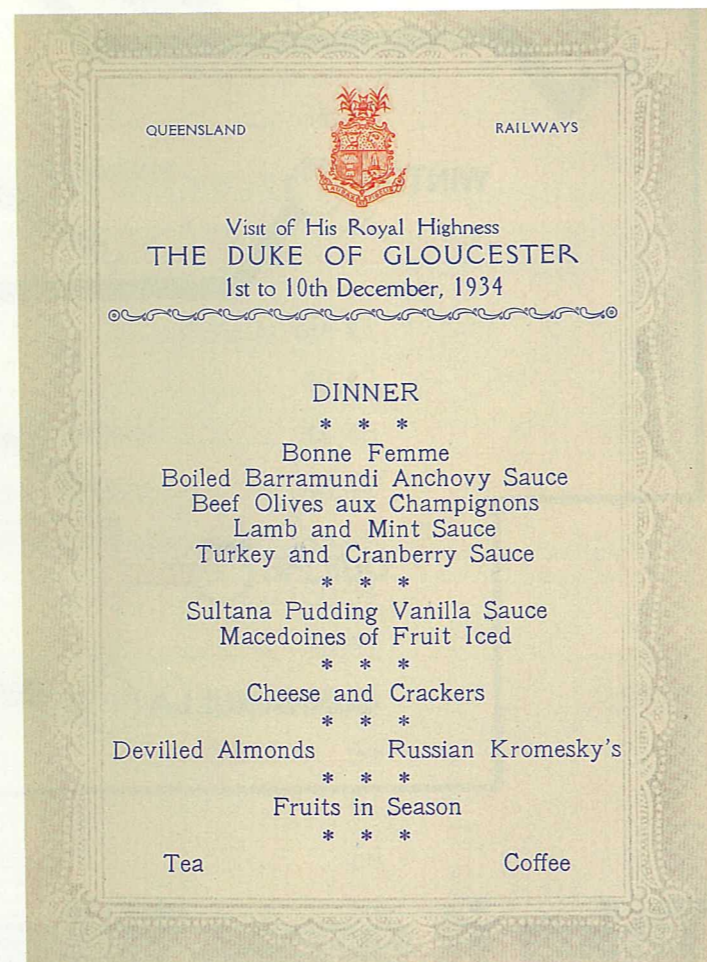
World War II saw Queensland Railways confronted with a huge logistical task which it successfully achieved in the movement of traffic

in support of the Pacific War. At the conclusion of the war, due to lack of essential maintenance, the Department's problems were on a scale never before experienced, and an ambitious program of rehabilitation was of necessity undertaken.

The start of the second century of the Queensland Railways saw the closure of some 38 branch lines which were not economically viable. However, it also opened a spectacular new era of development across the whole spectrum of the railway industry. With it, commenced a new generation of railway construction hand in hand with the development of the mining industry principally in Central Queensland — involving approximately 1250km of new routes, as well as the reconstruction of many hundreds of kilometres of existing trackage. These lines were generally constructed to an 18 tonnes axle load standard, an improvement of 50% on the previous maximum standard.

Rollingstock

The first locomotives imported from England for the infant "Southern and Western Railway" weighed 22 tons, burned firewood, and had a tractive effort of only 4500lb. Despite the fact that the development of steam locomotive



power in Queensland was limited by relatively low axle loading imposed by existing track and bridges, locomotives of up to 30,000lb tractive effort were introduced towards the end of the steam era. In excess of 1300 steam locomotives have operated on Queensland Railways, 60% being constructed within Queensland.

Queensland's first diesel locomotive was operating in 1939, but dieselisation of motive power was not pursued in earnest until the early 1950s. In 1969, the last steam locomotives ran in regular service being replaced by a fleet of diesel electric locomotives numbering in total 558, together with 73 diesel hydraulic locomotives. Development of the diesel electric locomotive over the past thirty years has progressed to the stage where the maximum locomotive rating now is 299kN.

A significant advance in block mineral train operations was the introduction in 1974 of the remote control of a second set of locomotives located towards the middle of the train, enabling gross train loads currently of 10,500 tonnes to be carried.

Queensland Railways' passenger stock grew from its first imported carriages to purpose-built sets for its principal train "The Sydney Express" and in 1935 "The Sunshine Express", the first completely fitted roller-bearing train in Australia. In 1953, this wooden stock gave way to a new generation of steel air-conditioned carriages for services on the North Coast and the three western routes.

Goods stock has similarly developed from a propensity of wooden four-wheeled stock with a gross load of 10 tons to bogie steel or

aluminium-bodied vehicles, the largest of which is capable of carrying a load of 90 tonnes.

Technology

Technology associated with the railways has also seen immense change. For example, the first mechanical interlocking of signals was introduced in 1880; four years later the staff and ticket system of safe working became universal. Now 1500km of track is operated by Centralised Traffic Control.

1979 saw yet another era commence for Queensland Railways with the inauguration of the 25kV electrification of the Brisbane Suburban Network. Progressive electrification of the whole of the Brisbane network was completed in February, 1988.

25kV electrification of selected main lines commenced in 1984 under a four-stage scheme where a total of 2100 single track kilometres is available for electric traction, using locomotives with a tractive rating of 375kN. The electrified main lines comprise the mineral railways of Central Queensland together with the North Coast Line from Brisbane to Rockhampton.

Since its inception, the history of the Queensland Railways has been inseparable from the history of the Colony and State of Queensland. The railways were the significant force responsible for the pioneering of the Colony. Their subsequent development has met the challenges of the transport demand, and it may be said with some conviction that the economic and social progress of the State of Queensland has largely been due to the contribution of its railways.



"Cabs" waiting at Ipswich Station late 1890s

WESTERN LINE—CONTINUED.

UP

CUNNAMULLA.

Miles from Brisbane.		Mxd.	Wed. and Sat.	p.m.
318	Roma			12 35
323	Bungew			
329	Hodgson			
334	Bindango			
339	Brinsop			
344	Muckadil			2 25
352	Eurella	a 6 40	a 9 10	a 11 0
357	Amby	6 55	9 30	11 20
361	360½ Miles		d	d
366	Marbango	a 7 20	d 10 0	d 11 50
368	Chapman's Sidi			
372	MITCHELI			
	Ditto			
381	Womallila			
384	Ulandilla			
400	Mungallala			
411	Dulbydilla			
427	MORVEN			
	Ditto			
442	Angellala			
454	Lurnea			
460	Sommariva			
470	Arabella			
479	Meat Works			
483	CHARLEY			
483	Ditto			
496	Westgate			
496	Westgate	dep		
508	Myendetta	from	d	
515	Wanko	eville	a	
518	Nimaru			
532	Loddon			
545	Cooladdi			
556	Yala			
573	Cheep			
498	Westg			
500	Walla			
511	Manga			
517	Dillala			
522	Yanna			
527	Murwe			
533	Quilber			
544	WYA.			
	Ditto			
553	Clavert			
565	Offham			
572	Coongoo			
593	Phillott			



Sunshine Express Mayne, 1930s



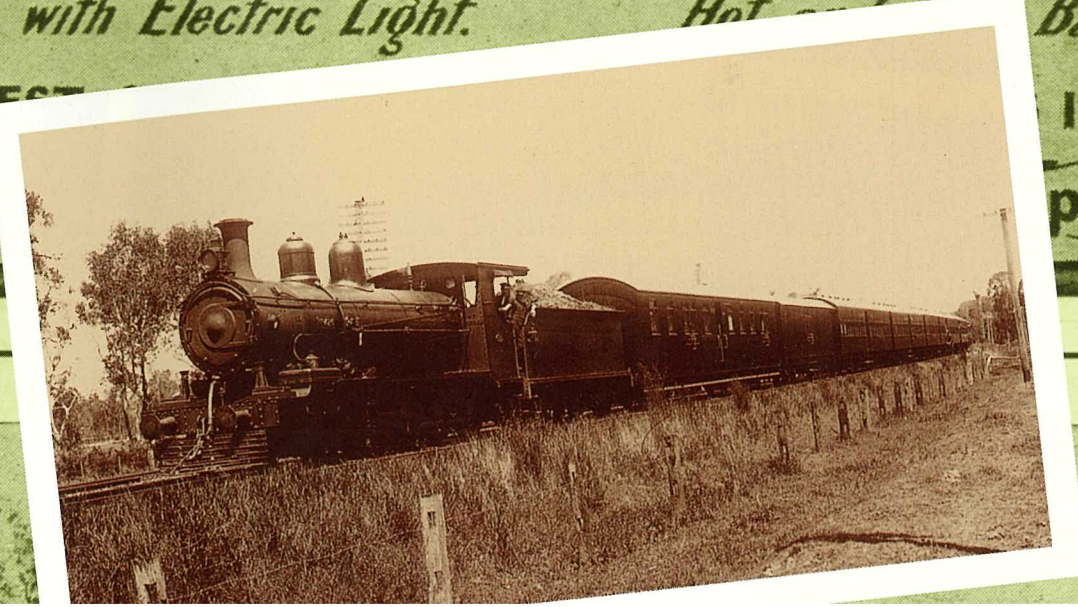
Sunshine Express Dining Car



First Passenger Train, 1865



Townsville Station, 1913



Pastoral and C.T.A. House.

NEWLY BU

One of the finest Hotels in Queensland. most comfort in town. Fitted with Electric Light. Hot Baths etc.

LARGEST

H

IN THE STATE. proprietor.

ROOMS

UNDER VICE REGAL

LE ELC

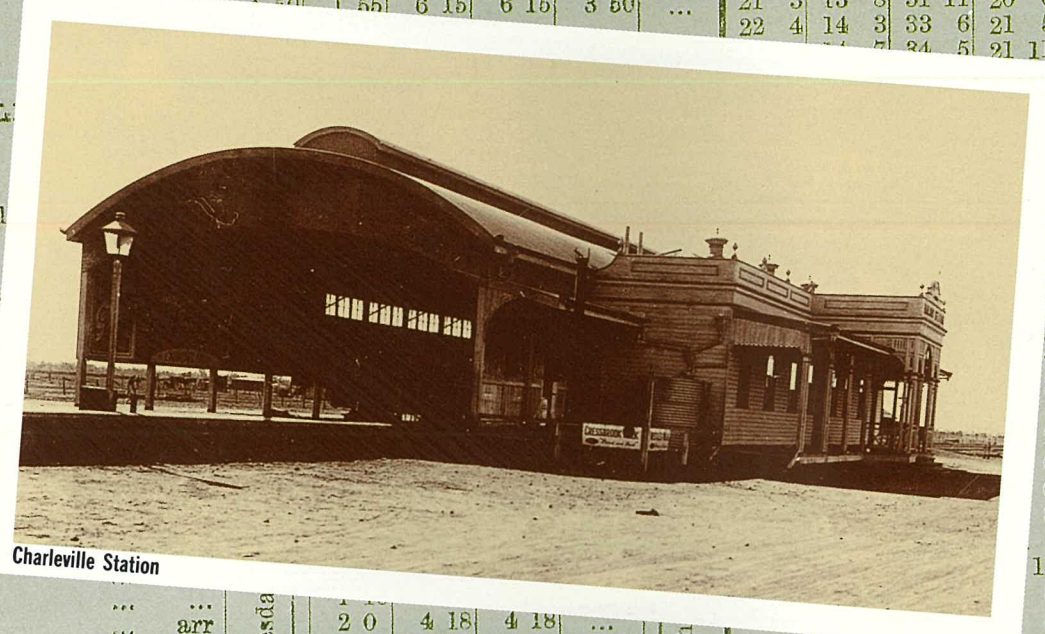
C H A D

CENTRAL LINE—CONTINUED.
UP TRAINS—ROCKHAMPTON TO LONGREACH

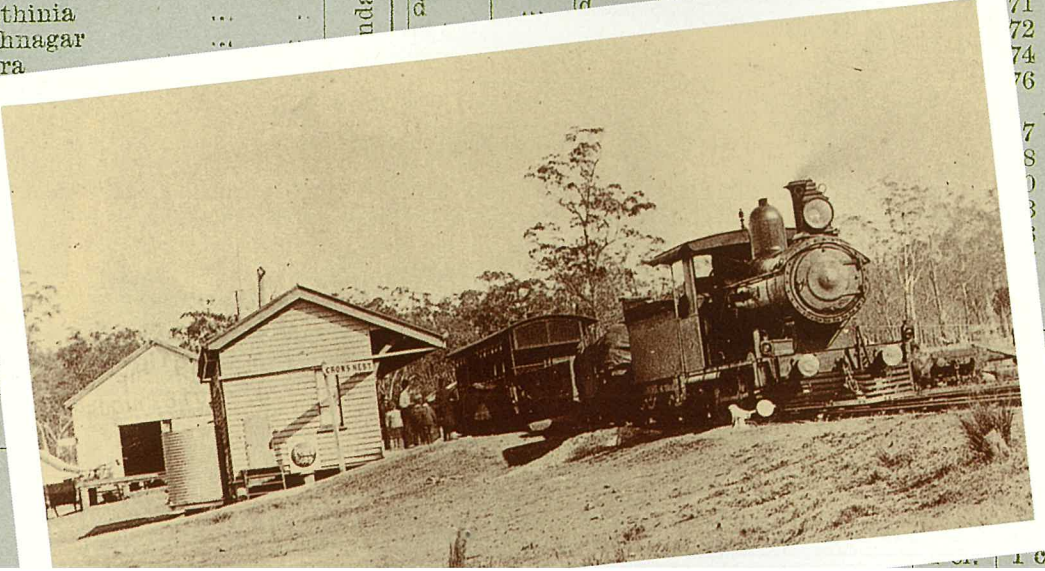
Height.	Miles from Archer Park.	Station	Time	Time	Time	Time	Time	Time	Time	Time	Time	Time	Time
501	31	WE
425	35	Di
255	39	Wing
324	54	Herb
206	59	Boob
204	60	Bimba
274	66	Duar
448	73	Wall
375	78	Tryph
370	84	Goowa
372	89	Dingo
435	97	Stanley
489	103	Walton
547	107	Bluff
604	119	Blackwater
734	129	Tolmie
542	141	Comet
590	148	Karvella
585	152	Yamala
587	160	Weemah
581	166	EMERALD
780	176	Selma
754	180	Taroborah
803	186	Glendarriwil
815	193	Anakie
913	200	Borilla
829	205	Withersfield
865	213	Willows
871	214	Woodbine
1010	224	Billaboo
1096	228	Bogantung
1455	242	Drummond
1155	253	Pine Hill
1160	257	Beaufort
1144	273	Alpha
1224	284	Talarena
1314	291	Beta
1140	307	Jericho
1119	321	Springvale
983	328	Alice
1108	334	Eusthinia
1038	338	Lochnagar
908	350	Geera
869	361	I
873	367	V
896	373	S
860	383	B
778	398	D
695	411	H
653	420	O
612	428	E



Southport, circa 1900



Charleville Station



Archer Park.



Petrol-Driven Rail Motor with open Trailer



Central Station, circa 1950



Archer Park.

HOTEL OFF 10/6 PER DAY

Arrangements for Families & PERMANENT BOARDERS.

RE

TO-DATE HOTEL

ASSOCIATION HOUSE.

Fine Spacious Balconies

Large well furnished

Coffee Room & Dining

Wines selected.

Programs of entertainment.

Meals always

For Cars arranged.



EVERYTHING BUT THE ROOFTOP POOL

You work hard. You deserve a bit of pampering. Take the Queenslander Traveltrain and let us spoil you for 32 hours. You'll be treated to all the luxuries normally found in a first-class hotel.

BE OUR GUEST

With a name like "The Queenslander" you'd expect to be treated like royalty and you are.

Inside the gleaming silver and blue carriages first-class passengers enjoy private air-conditioned accommodation.

Each compartment features comfortable beds, reading lights, washbasin and electric power point. Colour co-ordinated blankets, linen and towels are also provided.

SUPERB DINING — QUEENSLAND STYLE

Sumptuous food, a chilled bottle of wine and first-class service.

A series of special menus offer a varied selection of delectable Queensland dishes from right across the State — from delicate Barrier Reef seafood to prime Central Queensland beef. The creamy desserts and sweet tropical fruits are sure to tempt. For first-class passengers, meals are all inclusive.

SIT BACK AND RELAX

Chat with fellow travellers over a cup of tea or coffee. Relax with a quiet drink from the bar. Read a magazine or watch the latest video. The lounge car, which is beautifully decorated with Queensland timber panelling, polished brass fittings and plush furniture, is the ideal place to sit back and unwind.

TAKE YOUR CAR, THE EASY WAY

The Queenslander's "on-board" MotorRail service is one more feature exclusive to Queensland Railways' premier Traveltrain. It gives you the option of taking your private vehicle with you, the easy way.

Arrive at your destination refreshed and relaxed, then continue your holiday with the convenience of your own car.

The Queenslander — the best way to experience the glorious weather and spectacular scenery of the Sunshine State.

So start your holiday on the right track . . . aboard "The Queenslander".



A NEW TRAVEL EXPERIENCE BETWEEN BRISBANE AND ROCKHAMPTON

The "Spirit of Capricorn" is the newest and most modern member of the Queensland Railways Traveltrain fleet. It is the first all-electric daylight service operating between Brisbane and Rockhampton on the scenic 630 kilometre coastal route.

The "Spirit" runs seven days a week. Advanced levels of technology and safety offer passengers the contemporary comfort and convenience of an aircraft, but at the price of road travel.

CATCH THE SPIRIT . . . OF COMFORT

This new service features a host of modern-day facilities. It is all electric, thus a whisper-quiet journey is assured. All carriages are fully air-conditioned, with a temperature control unit to ensure maximum comfort for all seasons.

Large windows allow panoramic views of the beautiful Queensland scenery. These are tinted, triple glazed and have sunshades to prevent glare.

The seating has a striking colour scheme of green and gold. Each seat is a full-length recliner and is able to be reversed so as to create an ideal environment for conversational foursomes. Double and single seats are available.

CATCH THE SPIRIT . . . OF DINING

Passengers dine in style on the "Spirit of Capricorn". Aircraft-style meals, light refreshments and drinks are served to your seat by our hostesses.

Just sit back, enjoy the delicious food and beverages and watch the scenery rush by.

CATCH THE SPIRIT . . . OF RELAXATION

The "Spirit" gives you the ideal opportunity to relax and take it easy. The ride is whisper-quiet and smooth, travelling up to a swift 120 km/h.

When you arrive at your destination, you'll feel refreshed, relaxed and looking forward to your next trip on the "Spirit of Capricorn".



BRISBANE TO CAIRNS				CAIRNS TO BRISBANE			
Km from Brisbane			Sunday	Km from Cairns			Tuesday
-	Brisbane (Roma Street).....	DEP	9.10am	-	Cairns	DEP	8.15am
58	Caboolture	DEP	10.02	87	Innisfail	ARR	10.01
105	Nambour.....	DEP	11.00			DEP	10.03
172	Gympie North	ARR	12.15pm	135	Tully	ARR	10.55
Gympie passengers change at Gympie North where a Coach transfer is provided. Passengers joining "The Queenslander" are to check in at the Gympie Station Ticket Office prior to the departure of the Coach at 11.55am.						DEP	10.57
172	Gympie North	DEP	12.25	232	Ingham.....	ARR	12.37pm
267	Maryborough West	ARR	2.00			DEP	12.39
Maryborough passengers change at Maryborough West where a Coach transfer is provided. Passengers joining "The Queenslander" are to check in at the Maryborough Station prior to the departure of the Coach at 1.35pm.				340	Townsville.....	ARR	2.45
267	Maryborough West	DEP	2.04			DEP	3.15
351	Bundaberg.....	ARR	3.10	421	Ayr.....	DEP	4.57
		DEP	3.13	432	Home Hill	DEP	5.11
529	Gladstone	ARR	6.02	531	Bowen.....	ARR	7.04
		DEP	6.10			DEP	7.08
639	Rockhampton	ARR	7.45	596	Proserpine	ARR	8.21
		DEP	8.10			DEP	8.25
			Monday	717	Mackay	ARR	10.45
964	Mackay	ARR	2.45am			DEP	11.00
		DEP	3.00	1042	Rockhampton	ARR	5.15am
1085	Proserpine.....	ARR	5.25			DEP	5.40
		DEP	5.30	1152	Gladstone	ARR	7.10
1150	Bowen.....	ARR	6.35			DEP	7.20
		DEP	6.40	1330	Bundaberg.....	ARR	10.07
1249	Home Hill	DEP	8.28			DEP	10.10
1260	Ayr.....	DEP	8.42	1414	Maryborough West	ARR	11.15
1341	Townsville.....	ARR	10.30	Maryborough passengers change at Maryborough West where a Coach transfer is provided. Passengers joining "The Queenslander" are to check in at the Maryborough Station prior to the departure of the Coach at 10.50am.			
		DEP	10.55	1414	Maryborough West	DEP	11.19
1449	Ingham.....	ARR	12.57pm	1509	Gympie North	ARR	12.50pm
		DEP	12.59	Gympie passengers change at Gympie North where a Coach transfer is provided. Passengers joining "The Queenslander" are to check in at the Gympie Station Ticket Office prior to the departure of the Coach at 12.30pm.			
1546	Tully	ARR	2.32	1509	Gympie North	DEP	1.00
		DEP	2.34	1576	Nambour.....	DEP	2.19
1594	Innisfail	ARR	3.26	1630	Caboolture	DEP	3.18
		DEP	3.29	1681	Brisbane (Roma Street)	ARR	4.25pm
1681	Cairns.....	ARR	5.20pm				

+ SINGLE FIRST CLASS INCLUSIVE FARES

Fares from Brisbane to	+ SINGLE FIRST CLASS INCLUSIVE FARES						= SITTING CAR	
	Adult	!Child	†Student	‡Pensioner Concession	*Pensioner 1 Free Travel Voucher	**Austral Pass & Pensioner 2 Free Travel Voucher	Adult	‡Pensioner †Student !Child
Mackay	230.20	134.50	148.10	168.10	147.50	106.00	82.70	41.35
Proserpine	236.70	137.75	151.35	171.35	149.50	106.00	87.20	43.60
Bowen	250.80	145.70	162.90	182.90	160.20	115.00	90.60	45.30
Home Hill	267.90	154.85	174.45	196.95	173.30	126.00	94.60	47.30
Ayr	267.90	154.85	174.45	196.95	173.30	126.00	94.60	47.30
Townsville	273.00	157.40	177.00	199.50	175.00	126.00	98.00	49.00
Ingham	289.00	166.20	189.00	214.00	189.00	139.00	100.00	50.00
Tully	302.80	173.90	199.90	224.90	199.00	147.00	103.80	51.90
Innisfail	302.80	173.90	199.90	224.90	199.00	147.00	103.80	51.90
Cairns	311.50	178.55	205.75	230.75	203.80	150.00	107.70	53.85

Legend: See "Concessional Fares"

SLEEPING BERTHS: These are provided for First Class travel only.

FIRST CLASS ROOMETTES: Consist of single-berth compartments each containing a wardrobe, washbasin, towel, power point (240 volt A.C.), toilet facilities and bedding. NOTE: There is no single supplement charge for roomettes.

FIRST CLASS TWINETTES: Consist of two-berth compartments each containing two wardrobes, washbasin, towels, full-length mirror, power point (240 volt A.C.), reading lights and bedding.

SHOWERS: Showers are provided at the end of all sleeping cars and sitting cars.

TOILETS: Are provided at the end of all sleeping cars and sitting cars.

SITTING CARS: (Economy Class) Have been constructed as open saloon cars with overhead luggage racks and individual reading lights. Each seat may be reclined to the desired position by pressing a button in the armrest.

LOUNGE CAR: The Queenslander's distinctive Lounge Car is available to First Class Passengers only. It offers the ultimate in First Class travel comfort. Whether sitting around the curved centre bar having a quiet drink, or watching the latest video movie on TV, or even just having a cup of coffee, the relaxed atmosphere lets passengers take it easy in style. Diffused lighting, soft carpet and panelling in beautiful Queensland timbers, create the perfect environment for relaxed travel.

CLUB CAR: Except for some periods of travel the Club Car offers economy class passengers continuous services for light refreshments, drinks and confectionery. Beer, wine and spirits are also available in the Club Car at nominated times.

DINING CAR: The luxury Dining Car has been carefully designed for the comfort of passengers. Glass partitions between the tables give the added touch of privacy. The Dining Car offers a series of very special menus each featuring a selection of fine Queensland dishes. For First Class Passengers, meals are included in the fare.

PASSENGER'S LUGGAGE: Is conveyed free of charge up to 80kg irrespective of the class of travel bearing in mind that space in Roomettes is limited. Luggage will be accepted up to 30 minutes prior to departure.

RESERVATIONS: Sleeper or seat reservations may be made six months in advance. Smoking or non-smoking accommodation may be nominated in both Sleeping and Sitting Cars.

CONCESSIONAL FARES:

- + First Class fares include meals and sleeping berth charges.
- = Economy fares apply to sitting cars only and do not include meals which are provided "Table D' Hote".
- ! Child fares apply to children 4 years and under 16 years of age.
- † Students 16 years and over enrolled at an approved educational establishment within Australia and in possession of current Railways of Australia Student Identification Card.
- ‡ Pensioner fares apply to Queensland residents only, in possession of a current Transport Concession Card (TC1) or Dependant Treatment Entitlement Card (DTEC) issued by the Department of Social Security or the Department of Veterans' Affairs.
- * Additional fare payable by Queensland Pensioner in possession of one Free Rail Travel Voucher issued by The Department of Welfare Services.
- ** Additional fare payable by passenger in possession of an Australpass or a Queensland Pensioner in possession of two Free Rail Travel Vouchers issued by The Department of Welfare Services. Return fares are double the single fare.

TRAVEL RESTRICTIONS: See page 34.

NORTHBOUND: First Class passengers may entrain at nominated stations between Brisbane and Rockhampton and detrain at nominated stations between Mackay and Cairns — inclusive.

SOUTHBOUND: First Class passengers may entrain at nominated stations between Cairns and Mackay and detrain at nominated stations between Rockhampton and Brisbane — inclusive.

ECONOMY CLASS: Break of journey is permitted provided the journey is completed within the time specified below:—

SINGLE TICKETS	DISTANCE	AVAILABILITY
	1- 500 km	5 Days
	501-1000 km	10 Days
	over-1000 km	14 Days

Not including Sundays whether the day of issue or otherwise.

RETURN TICKETS

The forward journey is the same as for single tickets. The return journey must be completed within two months from the date of commencement of the forward journey.

NOTE: See page 34 for passenger stops and restrictions.

CANCELLATION: If travel is unable to be undertaken after the tickets have been issued cancellation fees may apply. Therefore it is imperative that unwanted reservations be cancelled promptly.

MOTORRAIL:

- (a) The service is primarily intended to cater for First Class Sleeping Berth passengers' vehicles and pre-booking will be accepted up to six months in advance. When space is available the service may be extended to other passengers with bookings limited up to three months in advance.
- (b) Caravans, boat trailers, roof-loaded boats or canoes will not be accepted for carriage by MotorRail. All vehicles are subject to height and width restrictions and are conveyed at the owner's risk.
- (c) Other restrictions do apply.

VEHICLE CHARGES	Accompanied	Unaccompanied
FROM BRISBANE TO: Townsville	\$180.00	\$270.00
Cairns	\$190.00	\$285.00

BRISBANE TO CAIRNS			CAIRNS TO BRISBANE		
Km from Brisbane		Tue, Thur and Sat.	Km from Cairns		Mon, Thur and Sat.
-	Brisbane (Roma Street)..... DEP	9.10am	-	Cairns..... DEP	7.00am
11	Northgate..... DEP	9.31	87	Innisfail..... ARR	8.50
58	Caboolture..... DEP	10.08			8.55
105	Nambour..... DEP	11.07	135	Tully..... ARR	9.48
172	Gympie North..... ARR	12.15pm			9.58
Gympie passengers change at Gympie North where a Coach transfer is provided. Passengers joining "The Sunlander" are to check in at the Gympie Station Ticket Office prior to the departure of the Coach at 12.05pm.					
172	Gympie North..... DEP	12.35pm	232	Ingham..... ARR	11.35
267	Maryborough West..... ARR	2.31			11.40
Maryborough passengers change at Maryborough West where a Coach transfer is provided. Passengers joining "The Sunlander" are to check in at the Maryborough Station prior to the departure of the Coach at 2.05pm.					
267	Maryborough West..... DEP	2.35	340	Townsville..... ARR	1.45pm
351	Bundaberg..... ARR	3.45			2.20
		DEP 3.50	421	Ayr..... DEP	4.08
529	Gladstone..... ARR	6.40	432	Home Hill..... DEP	4.22
		DEP 6.55	531	Bowen..... ARR	6.14
639	Rockhampton..... ARR	8.35			DEP 6.19
		DEP 9.00	596	Proserpine..... ARR	7.30
		Wed, Fri and Sun.			DEP 7.35
812	St Lawrence..... DEP	12.34am	717	Mackay..... ARR	9.55
864	Mackay..... ARR	3.35			DEP 10.10
		DEP 3.50	870	St Lawrence..... DEP	1.23am
1085	Proserpine..... ARR	6.15	1042	Rockhampton..... ARR	4.40
		DEP 6.20			DEP 5.10
1150	Bowen..... ARR	7.25	1152	Gladstone..... ARR	6.40
		DEP 7.30			DEP 6.50
1249	Home Hill..... DEP	9.19	1330	Bundaberg..... ARR	9.40
1260	Ayr..... DEP	9.35			DEP 9.45
1341	Townsville..... ARR	11.20	1414	Maryborough West..... ARR	10.56
		DEP 11.50	Maryborough passengers change at Maryborough West where a Coach transfer is provided. Passengers joining "The Sunlander" are to check in at the Maryborough Station prior to the departure of the Coach at 10.30am		
1449	Ingham..... ARR	1.47pm	1414	Maryborough West..... DEP	11.00
		DEP 1.53	1509	Gympie North..... ARR	12.45pm
1546	Tully..... ARR	3.28	Gympie passengers change at Gympie North where a Coach transfer is provided. Passengers joining "The Sunlander" are to check in at the Gympie Station Ticket Office prior to the departure of the Coach at 12.25pm.		
		DEP 3.38	1509	Gympie North..... DEP	12.55pm
1594	Innisfail..... ARR	4.30	1576	Nambour..... DEP	2.20
		DEP 4.35	1630	Caboolture..... DEP	3.21
1681	Cairns..... ARR	6.30pm	1670	Northgate..... DEP	4.04
			1681	Brisbane (Roma Street)..... ARR	4.25pm



QR's Super Sunlander travel train pictured travelling northbound near Pomona.

FARES

FROM BRISBANE TO	First Berth ADULT	First Berth HALF	Economy Berth ADULT	Economy Berth HALF	Sitting Car ADULT
Mackay	156.20	94.10	101.70	60.35	82.70
Proserpine	162.70	97.35	106.20	62.60	87.20
Bowen	167.80	99.90	109.60	64.30	90.60
Home Hill	173.90	102.95	113.60	66.30	94.60
Ayr	173.90	102.95	113.60	66.30	94.60
Townsville	179.00	105.50	117.00	68.00	98.00
Ingham	182.00	107.00	119.00	69.00	100.00
Tully	187.80	109.90	122.80	70.90	103.80
Innisfail	187.80	109.90	122.80	70.90	103.80
Cairns	193.50	112.75	126.70	72.85	107.70

TRAVEL FACILITIES AND SERVICES

SLEEPING BERTHS: These are provided for both First and Economy Class Travel.

FIRST CLASS ROOMETTES: Consist of single-berth compartments each containing a wardrobe, washbasin, towel, power point (240 volt A.C.), toilet facilities and bedding. NOTE: There is no single supplement charge for roomettes.

FIRST CLASS TWINETTES: Consist of two-berth compartments each containing two wardrobes, washbasin, towels, full-length mirror, power point (240 volt A.C.), reading lights and bedding.

ECONOMY CLASS SLEEPING CARS: Consist of three-berth compartments each containing a washbasin, towels, power point (240 volt A.C.) and reading lights. A pillow, pillow slip and blanket are provided for each berth.

SHOWERS: Showers are provided at the end of all sleeping cars and sitting cars.

TOILETS: Are provided at the end of all sleeping cars and sitting cars.

SITTING CARS: (Economy Class) Have been constructed as open saloon cars with overhead luggage racks and individual reading lights. Each seat may be reclined to the desired position by pressing a button in the armrest.

DINING AND CLUB CAR SERVICE: A Dining Car, which is available to all passengers, plus two Club Cars (one for the Sleeping Car passengers and the other for Sitting Car passengers) are attached to all "Sunlander" Traveltrain Services. The Club Cars are tastefully furnished with both lounge and club style chairs. The Club Cars have a congenial atmosphere and, except for some periods of night travel, offer continuous service for light refreshments, drinks and confectionery. If desired passengers may take light refreshments to their seat or cabin. A restricted liquor service is also available for consumption in the Club Car.

The Club Cars operate in conjunction with the Dining Car where three-course meals (Table D' Hote) can be purchased including breakfast on the morning of departure from Cairns. Meal tickets are distributed by the Passenger Attendants.

PASSENGER'S LUGGAGE: Is conveyed free of charge up to 80kgs irrespective of the class of travel bearing in mind that space in the Roomettes is limited. Luggage will be accepted up to 30 minutes prior to departure.

RESERVATIONS: Sleeper or seat reservations may be made six months in advance. Reservations for short journeys are restricted to seven (7) days prior to travel. Smoking or non-smoking accommodation may be nominated in both Sleeping and Sitting Cars.

CONCESSIONAL FARES: Half fares apply to:-

CHILDREN: Four years and under sixteen years of age.

STUDENTS: Sixteen and over in possession of a current Railways of Australia Student Identification Card.

PENSIONERS: (QUEENSLAND RESIDENTS ONLY) Presenting a current Transport Concession Card (TC1).

NOTE: Students and Pensioners must carry their Identification or Transport Concession Cards on the train.

TRAVEL RESTRICTIONS: Break of journey is permitted provided the journey is completed within the time specified below:-

SINGLE TICKETS	DISTANCE	AVAILABILITY
	1- 500 km	5 Days
	501-1000 km	10 Days
	over-1000 km	14 Days

Not including Sundays whether the day of issue or otherwise.

RETURN TICKETS

The forward journey is the same as for single tickets. The return journey must be completed within two months from the date of commencement of the forward journey.

NOTE: See page 34 for passenger stops and restrictions.

CANCELLATION: If travel is unable to be undertaken after the tickets have been issued cancellation fees may apply. Therefore it is imperative that unwanted reservations be cancelled promptly.

SPiRiT OF CAPRICORN

BRISBANE TO ROCKHAMPTON				ROCKHAMPTON TO BRISBANE			
Km from Brisbane		Daily		Km from Rockhampton		Daily	
-	Brisbane (Roma Street).....	DEP	8.15am	-	Rockhampton.....	DEP	8.15am
51	Caboolture	DEP	9.02	74	Mount Larcom	DEP	9.09
82	Landsborough	DEP	9.30	110	Gladstone	ARR	9.39
105	Nambour.....	DEP	9.57			DEP	9.44
131	Cooroy	DEP	10.20	179	Miriam Vale.....	DEP	10.38
172	Gympie North.....	ARR	11.09	288	Bundaberg.....	ARR	12.17pm
Gympie passengers change at Gympie North where a Coach Transfer is provided. Passengers joining the "SPIRIT OF CAPRICORN" are to check in at the Gympie Station Ticket Office prior to the departure of the Coach at 10.45am.				Maryborough passengers change at Maryborough West where a Coach Transfer is provided. Passengers joining the "SPIRIT OF CAPRICORN" are to check in at the Maryborough Station prior to the departure of the Coach at 1.00pm.			
172	Gympie North	DEP	11.14	376	Maryborough West	DEP	1.33
267	Maryborough West.....	ARR	12.34pm	467	Gympie North	ARR	2.55
Maryborough passengers change at Maryborough West where a Coach Transfer is provided. Passengers joining the "SPIRIT OF CAPRICORN" are to check in at the Maryborough Station prior to the departure of the Coach at 12.05pm.				Gympie passengers change at Gympie North where a Coach Transfer is provided. Passengers joining the "SPIRIT OF CAPRICORN" are to check in at the Gympie Station Ticket Office prior to the departure of the Coach at 2.30pm.			
267	Maryborough West	DEP	12.37	467	Gympie North	DEP	3.00
293	Howard.....	DEP	12.55	508	Cooroy	DEP	3.48
351	Bundaberg.....	ARR	1.42	534	Nambour.....	DEP	4.12
		DEP	1.45	557	Landsborough	DEP	4.40
460	Miriam Vale.....	DEP	3.27	586	Caboolture	DEP	5.10
529	Gladstone	ARR	4.25	639	Brisbane (Roma Street)	ARR	6.00pm
		DEP	4.30				
565	Mount Larcom	DEP	5.01				
639	Rockhampton	ARR	6.00pm				



"Spirit" en route to Rockhampton



FARES

FROM BRISBANE TO	ADULT	HALF			
Cooroy	11.80	5.90	Miriam Vale	42.90	21.45
Gympie North	16.10	8.05	Gladstone	48.50	24.25
Maryborough West	28.70	14.35	Mt. Larcom	50.10	25.05
Bundaberg	34.50	17.25	Rockhampton	55.30	27.65

NOTE: The above are Rail Fares only and do not include compulsory meals (see "MEALS" below)

TRAVEL FACILITIES AND SERVICES

SITTING CARS: (Economy Class) Have been constructed as open saloon cars with overhead luggage racks and individual reading lights. Each seat may be reclined to the desired position by pressing a button in the armrest. A public address and background music system is provided together with panoramic windows with shade control. Single or double seats are available.

TOILETS: Are provided at the end of all sitting cars.

REFRESHMENTS: Drinks, including liquor, confectionery, sandwiches, tea and coffee and other light refreshments will be available for purchase on the train. All refreshments are served to passengers in their seat.

MEALS: (NORTHBOUND) A meal charge of \$9.00 for adults and \$6.00 for children (to be added to the applicable fare at the time of ticket purchase) will apply to ALL passengers, except Pensioners, boarding between Brisbane and Cooroy inclusive and who are alighting between Miriam Vale and Rockhampton inclusive. For children under 4 years of age see below.

MEALS: (SOUTHBOUND) The same charges will apply to ALL passengers, except Pensioners, boarding between Rockhampton and Miriam Vale inclusive and who are alighting between Cooroy and Brisbane inclusive. For children under 4 years of age the meal charge is not compulsory. If a child under 4 years of age wishes to have a meal the price is to be included in the ticket.

Concessional Fare Travellers except Pensioners must pay the meal charge where applicable. Passengers making reservations for travel between stations other than those specified — the purchase of the meal will be optional at the time of booking or while on the train. Pensioners utilising their Free Rail Travel Vouchers or Half Fare Concession Cards are not required to pay the meal charge (Queensland Pensioners only). If a Pensioner wishes to have a meal the price is to be included in the ticket.

PASSENGER'S LUGGAGE: Is conveyed free of charge up to 80kg. Luggage will be accepted up to 30 minutes prior to departure.

RESERVATIONS: Seat reservations may be made six months in advance and either smoking or non-smoking accommodation may be nominated.

CONCESSIONAL FARES: Half fares (Rail Only) apply to:

CHILDREN: Four years and under sixteen years of age.

STUDENTS: Sixteen and over in possession of a current Railways of Australia Student Identification Card.

PENSIONERS: (QUEENSLAND RESIDENTS ONLY) Presenting a current Transport Concession Card (TC1).

NOTE: Students and Pensioners must carry their Identification or Transport Concession Cards on the train.

TRAVEL RESTRICTIONS: See page 35.

BREAK OF JOURNEY is permitted provided the journey is completed within the time specified below:—

SINGLE TICKETS	DISTANCE	AVAILABILITY
	1- 500 km	5 Days
	501-1000 km	10 Days
	over-1000 km	14 Days

Not including Sundays whether the day of issue or otherwise.

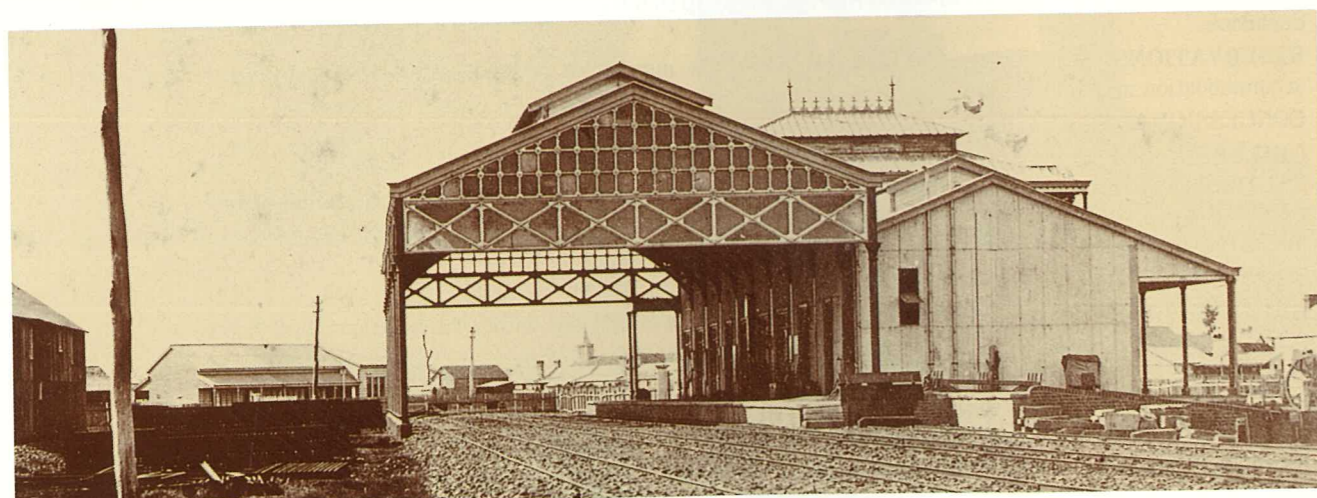
RETURN TICKETS

The forward journey is the same as for single tickets. The return journey must be completed within two months from the date of commencement of the forward journey.

NOTE: See page 35 for passenger stops and restrictions.

CANCELLATION: If travel is unable to be undertaken after the tickets have been issued cancellation fees may apply. Therefore it is imperative that unwanted reservations be cancelled promptly.

BRISBANE TO ROCKHAMPTON				ROCKHAMPTON TO BRISBANE			
Km from Brisbane		Thur Fri Sun		Km from Rockhampton		Thur Fri Sun	
-	Brisbane (Roma Street).....	DEP	7.50pm	-	Rockhampton.....	DEP	7.00pm
11	Northgate	DEP	8.10	34	Bajool	DEP	7.33
51	Caboolture	DEP	8.50	110	Gladstone	ARR	8.50
82	Landsborough	DEP	9.22			DEP	9.00
105	Nambour.....	DEP	9.53				Fri Sat Sun
131	Cooroy.....	DEP	10.22				
172	Gympie North.....	ARR	11.15				
Gympie passengers change at Gympie North where a Coach Transfer is provided. Passengers joining "THE CAPRICORNIAN" are to check in at the Gympie Station Ticket Office prior to the departure of the Coach at 10.55pm.				288	Bundaberg.....	ARR	12.01am
172	Gympie North.....	DEP	11.25			DEP	12.10
			Fri Sat Mon	372	Maryborough West.....	ARR	1.31
267	Maryborough West.....	ARR	1.00am	Maryborough passengers change at Maryborough West where a Coach Transfer is provided. Passengers joining "THE CAPRICORNIAN" are to check in at Maryborough Station prior to the departure of the Coach at 1.05am.			
Maryborough passengers change at Maryborough West where a Coach Transfer is provided. Passengers joining "THE CAPRICORNIAN" are to check in at Maryborough Station prior to the departure of the Coach at 12.40am.				372	Maryborough West.....	DEP	1.35
267	Maryborough West.....	DEP	1.10	467	Gympie North.....	ARR	3.05
351	Bundaberg.....	ARR	2.30	Gympie passengers change at Gympie North where a Coach Transfer is provided. Passengers joining "THE CAPRICORNIAN" are to check in at the Gympie Station Ticket Office prior to the departure of the Coach at 2.45am.			
		DEP	2.35	467	Gympie North.....	DEP	3.15
529	Gladstone.....	ARR	5.40	508	Cooroy.....	DEP	4.08
		DEP	5.50	534	Nambour.....	DEP	4.37
605	Bajool.....	DEP	7.13	557	Landsborough.....	DEP	5.05
639	Rockhampton.....	ARR	7.45am	588	Caboolture.....	DEP	5.40
				628	Northgate.....	DEP	6.20
				639	Brisbane (Roma Street).....	ARR	6.40am



"Early Days" Rockhampton Station



The Capricornian — Rockhampton Bound

FARES

FROM BRISBANE TO	First Berth ADULT	First Berth HALF	Economy Berth ADULT	Economy Berth HALF	Sitting Car ADULT
Gympie North	-	-	-	-	16.10
Maryborough West	77.80	54.90	47.70	33.35	28.70
Isis Junction	83.90	57.90	51.60	35.30	32.60
Bundaberg	86.90	59.45	53.50	36.25	34.50
Gladstone	109.10	70.55	67.50	43.25	48.50
Rockhampton	120.00	76.00	74.30	46.65	55.30

TRAVEL FACILITIES AND SERVICES

SLEEPING BERTHS: These are provided for both First and Economy Class Travel.

FIRST CLASS ROOMETTES: Consist of single-berth compartments each containing a wardrobe, washbasin, towel, power point (240 volt A.C.), toilet facilities and bedding. NOTE: There is no single supplement charge for roomettes.

FIRST CLASS TWINETTES: Consist of two-berth compartments each containing two wardrobes, washbasin, towels, full-length mirror, power point (240 volt A.C.), reading lights and bedding.

ECONOMY CLASS SLEEPING CARS: Consist of three-berth compartments each containing a washbasin, towels, power point (240 volt A.C.) and reading lights. A pillow, pillow slip and blanket are provided for each berth.

SHOWERS: Showers are provided at the end of all sleeping cars and some sitting cars.

TOILETS: Are provided at the end of all sleeping cars and sitting cars.

SITTING CARS: (Economy Class) Have been constructed as open saloon cars with overhead luggage racks and individual reading lights. Each seat may be reclined to the desired position by pressing a button in the armrest.

CLUB CAR SERVICE: Light refreshments are available in the Club Car from departure until 11.00pm plus the sale of beer, wine and spirits until 10.30pm. Next morning the Club Car commences service at 5.00am and remains open until arrival at the terminus.

PASSENGER'S LUGGAGE: Is conveyed free of charge up to 80kg irrespective of the class of travel bearing in mind that space in the Roomettes is limited. Luggage will be accepted up to 30 minutes prior to departure.

RESERVATIONS: Sleeper or seat reservations may be made six months in advance. Smoking or non-smoking accommodation may be nominated in both Sleeping and Sitting Cars.

CONCESSIONAL FARES: Half fares apply to:-

CHILDREN: Four years and under sixteen years of age.

STUDENTS: Sixteen and over in possession of a current Railways of Australia Student Identification Card.

PENSIONERS: (QUEENSLAND RESIDENTS ONLY) Presenting a current Transport Concession Card (TC1).

NOTE: Students and Pensioners must carry their Identification or Transport Concession Cards on the train.

TRAVEL RESTRICTIONS: Break of journey is permitted provided the journey is completed within the time specified below:-

SINGLE TICKETS	DISTANCE	AVAILABILITY
	1- 500 km	5 Days
	501-1000 km	10 Days
	over-1000 km	14 Days

Not including Sundays whether the day of issue or otherwise.

RETURN TICKETS

The forward journey is the same as for single tickets. The return journey must be completed within two months from the date of commencement of the forward journey.

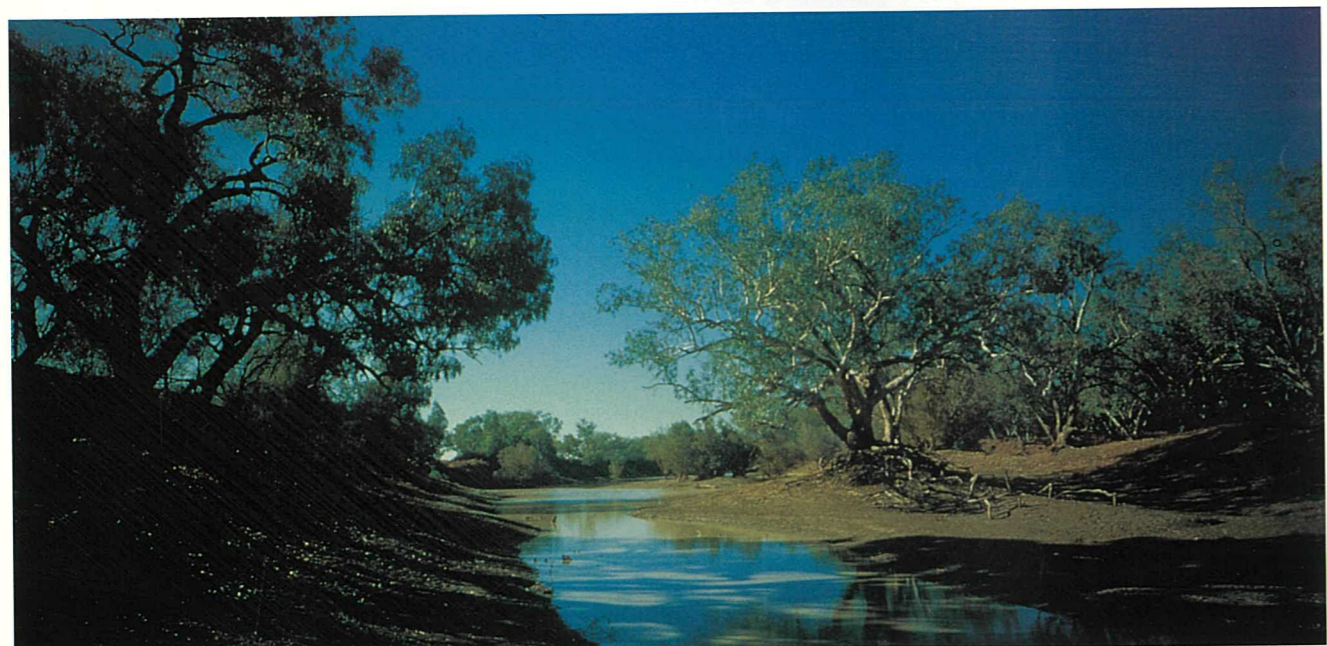
NOTE: See page 35 for passenger stops and restrictions.

CANCELLATION: If travel is unable to be undertaken after the tickets have been issued cancellation fees may apply. Therefore it is imperative that unwanted reservations be cancelled promptly.

BRISBANE TO CUNNAMULLA

CUNNAMULLA TO BRISBANE

Kilometres from Brisbane		Days		Kilometres from Charleville		Days	
-	Brisbane		Mon and Thur	221	Quilpie	DEP	Tue and Fri
	(Roma Street)	DEP	5.55pm	195	Cunnamulla	DEP	-
11	Corinda	DEP	6.09		Charleville	ARR	5.55pm
38	Ipswich	DEP	6.38			DEP	10.45
114	Helidon	DEP	7.59				Wed and Sat
161	Toowoomba	ARR	9.26	90	Morven	DEP	12.29am
		DEP	9.55	180	Mitchell	DEP	2.19
244	Dalby	DEP	11.53	265	Roma	ARR	3.55
						DEP	4.15
			Tue and Fri	406	Miles	DEP	6.38
325	Chinchilla	DEP	1.30am	452	Chinchilla	DEP	7.31
371	Miles	DEP	2.18	533	Dalby	DEP	9.02
512	Roma	ARR	4.45	616	Toowoomba	ARR	10.50
		DEP	5.15			DEP	11.25
597	Mitchell	DEP	7.12	663	Helidon	DEP	1.02pm
687	Morven	DEP	9.05	739	Ipswich	DEP	2.29
777	Charleville	ARR	10.38	766	Corinda	DEP	3.00
		DEP	11.20	777	Brisbane		
			11.50		(Roma Street)	ARR	3.15pm
972	Cunnamulla	ARR	3.40pm				
998	Quilpie	ARR	-				4.15pm



Channel Country



Cunnamulla Station



Westlander near Morven

FARES

FROM BRISBANE TO	First Berth ADULT	First Berth HALF	Economy Berth ADULT	Economy Berth HALF	Sitting Car ADULT
Toowoomba	-	-	-	-	15.40
Dalby	-	-	-	-	27.80
Chinchilla	83.90	57.95	51.60	35.30	32.60
Miles	89.10	60.55	55.00	37.00	36.00
Roma	105.90	68.95	65.50	42.25	46.50
Mitchell	114.30	73.15	70.90	44.95	51.90
Morven	125.90	78.95	78.10	48.55	59.10
Charleville	137.10	84.55	85.20	52.10	66.20
Cunnamulla	156.20	94.10	101.70	60.35	82.70
Quilpie	156.20	94.10	101.70	60.35	82.70

TRAVEL FACILITIES AND SERVICES

SLEEPING BERTHS: These are provided for both First and Economy Class Travel.

FIRST CLASS TWINETTES: Consist of two-berth compartments each containing two wardrobes, washbasin, towels, full-length mirror, power point (240 volt A.C.), reading lights and bedding.

ECONOMY CLASS SLEEPING CARS: Consist of three-berth compartments each containing a washbasin, towels, power point (240 volt A.C.) and reading lights. A pillow, pillow slip and blanket are provided for each berth.

SHOWERS: Showers are provided at the end of all sleeping cars.

TOILETS: Are provided at the end of all sleeping cars and sitting cars.

SITTING CARS: (Economy Class) Have been constructed as open saloon cars with overhead luggage racks and individual reading lights. Each seat may be reclined to the desired position by pressing a button in the armrest.

FOOD BAR CAR: Light refreshments, including grills, drinks, confectionery and ice-cream are available from the Food Bar Car. A restricted liquor service is available in the Food Bar Car.

PASSENGER'S LUGGAGE: Is conveyed free of charge up to 80kg irrespective of the class of travel. Luggage will be accepted up to 30 minutes prior to departure.

RESERVATIONS: Sleeper or seat reservations may be made six months in advance. Smoking or non-smoking accommodation may be nominated in both Sleeping and Sitting Cars.

CONCESSIONAL FARES: Half fares apply to:-

CHILDREN: Four years and under sixteen years of age.

STUDENTS: Sixteen and over in possession of a current Railways of Australia Student Identification Card.

PENSIONERS: (QUEENSLAND RESIDENTS ONLY) Presenting a current Transport Concession Card (TC1).

NOTE: Students and Pensioners must carry their Identification or Transport Concession Card on the train.

TRAVEL RESTRICTIONS: Break of journey is permitted provided the journey is completed within the time specified below:-

SINGLE TICKETS	DISTANCE	AVAILABILITY
	1- 500 km	5 Days
	501-1000 km	10 Days
	over-1000 km	14 Days

Not including Sundays whether the day of issue or otherwise.

RETURN TICKETS

The forward journey is the same as for single tickets. The return journey must be completed within two months from the date of commencement of the forward journey.

NOTE: See page 35 for passenger stops and restrictions.

CANCELLATION: If travel is unable to be undertaken after the tickets have been issued cancellation fees may apply. Therefore it is imperative that unwanted reservations be cancelled promptly.

ROCKHAMPTON TO WINTON

Km from Rockhampton		Tue and Fri
-	Rockhampton..... DEP	6.45pm
105	Duaringa..... DEP	8.26
142	Dingo..... DEP	8.57
169	Bluff..... DEP	9.23
189	Blackwater..... DEP	9.38
224	Comet..... DEP	10.06
265	Emerald..... ARR	10.40
		11.00
		Wed and Sat
438	Alpha..... ARR	3.07am
		DEP 3.30
493	Jericho..... DEP	4.37
579	Barcaldine..... ARR	6.00
		DEP 6.15
687	Longreach..... ARR	8.20
		DEP 8.45
752	Morella..... DEP	10.04
863	Winton..... ARR	12.20pm

WINTON TO ROCKHAMPTON

Km from Winton		Wed and Sat
-	Winton..... DEP	2.45pm
111	Morella..... DEP	4.59
176	Longreach..... ARR	6.15
		DEP 6.30
284	Barcaldine..... ARR	8.25
		DEP 8.30
370	Jericho..... DEP	10.00
425	Alpha..... ARR	11.02
		DEP 11.25
		Thur and Sun
598	Emerald..... ARR	3.23am
		DEP 3.35
639	Comet..... DEP	4.11
674	Blackwater..... DEP	4.39
693	Bluff..... DEP	4.55
721	Dingo..... DEP	5.21
758	Duaringa..... DEP	5.51
863	Rockhampton..... ARR	7.30am



The Midlander



Blackwater Station



Stockmans Hall of Fame, Longreach

FARES

FROM ROCKHAMPTON TO	First Berth ADULT	First Berth HALF	Economy Berth ADULT	Economy Berth HALF	Sitting Car ADULT
Blackwater	-	-	-	-	20.60
Emerald	-	-	-	-	28.70
Alpha	97.90	64.95	60.50	39.75	41.50
Jericho	103.60	67.80	64.00	41.50	45.00
Barcaldine	111.70	71.85	69.10	44.05	50.10
Longreach	125.90	78.95	78.10	48.55	59.10
Winton	148.20	90.10	96.60	57.80	77.60

TRAVEL FACILITIES AND SERVICES

SLEEPING BERTHS: These are provided for both First and Economy Class Travel.

FIRST CLASS ROOMETTES: Consist of single-berth compartments each containing a wardrobe, washbasin, towel, power point (240 volt A.C.), toilet facilities and bedding. NOTE: There is no single supplement charge for roomettes.

FIRST CLASS TWINETTES: Consist of two-berth compartments each containing two wardrobes, washbasin, towels, full-length mirror, power point (240 volt A.C.), reading lights and bedding.

ECONOMY CLASS SLEEPING CARS: Consist of three-berth compartments each containing a washbasin, towels, power point (240 volt A.C.) and reading lights. A pillow, pillow slip and blanket are provided for each berth.

SHOWERS: Showers are provided at the end of all sleeping cars.

TOILETS: Are provided at the end of all sleeping cars and sitting cars.

SITTING CARS: (Economy Class) Have been constructed as open saloon cars with overhead luggage racks and individual reading lights. Each seat may be reclined to the desired position by pressing a button in the armrest.

FOOD BAR CAR: Light refreshments, including grills, drinks, confectionery and ice-cream are available from the Food Bar Car. A restricted liquor service is available in the Food Bar Car. A Lounge area is provided in an adjacent car.

PASSENGER'S LUGGAGE: Is conveyed free of charge up to 80kg irrespective of the class of travel, bearing in mind that space in the roomettes is limited. Luggage will be accepted up to 30 minutes prior to departure.

RESERVATIONS: Sleeper or seat reservations may be made six months in advance. Smoking or non-smoking accommodation may be nominated in both Sleeping and Sitting Cars.

CONCESSIONAL FARES: Half fares apply to:-

CHILDREN: Four years and under sixteen years of age.

STUDENTS: Sixteen and over in possession of a current Railways of Australia Student Identification Card.

PENSIONERS: (QUEENSLAND RESIDENTS ONLY) Presenting a current Transport Concession Card (TC1).

NOTE: Students and Pensioners must carry their identification or Transport Concession Card on the train.

TRAVEL RESTRICTIONS: Break of journey is permitted provided the journey is completed within the time specified below:-

SINGLE TICKETS	DISTANCE	AVAILABILITY
	1- 500 km	5 Days
	501-1000 km	10 Days
	over-1000 km	14 Days

Not including Sundays whether the day of issue or otherwise.

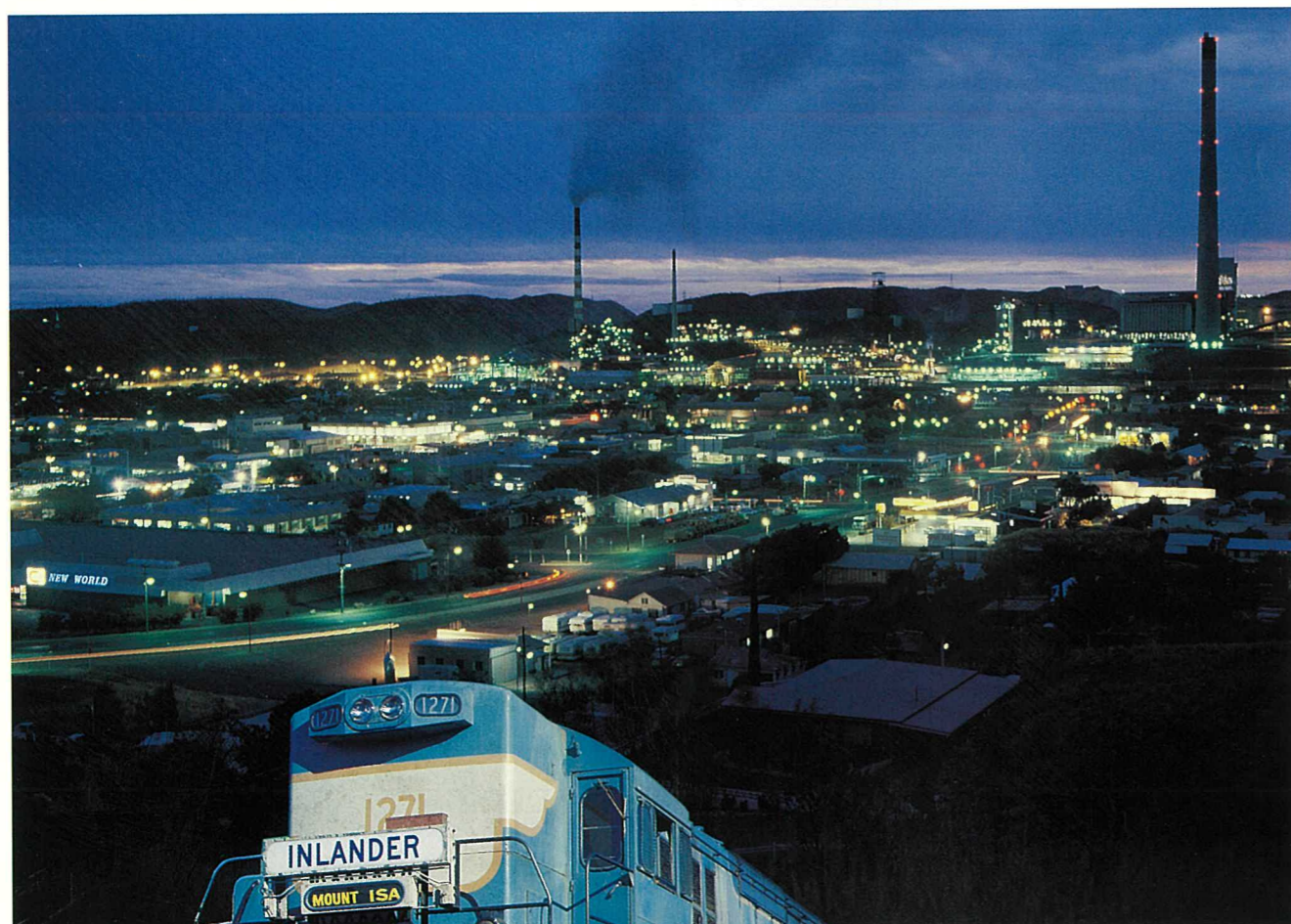
RETURN TICKETS

The forward journey is the same as for single tickets. The return journey must be completed within two months from the date of commencement of the forward journey.

NOTE: See page 35 for passenger stops and restrictions.

CANCELLATION: If travel is unable to be undertaken after the tickets have been issued cancellation fees may apply. Therefore it is imperative that unwanted reservations be cancelled promptly.

TOWNSVILLE TO MT ISA			MT ISA TO TOWNSVILLE		
Km from Townsville		Sun and Wed	Km from Mount Isa		Mon and Fri
-	Townsville	DEP 6.00pm	-	Mount Isa	DEP 3.00pm
57	Reid River	DEP 7.09	87	Duchess	DEP 4.23
138	Charters Towers	ARR 8.48	197	Cloncurry	ARR 6.15
		DEP 8.53			DEP 6.25
212	Homestead	DEP 10.12	258	Oorindi	DEP 7.29
298	Torrens Creek	DEP 11.52	329	Julia Creek	ARR 8.33
		Mon & Thur			DEP 8.38
388	Hughenden	DEP 1.30am	405	Nonda	DEP 9.59
		ARR 1.55	475	Richmond	ARR 11.03
502	Richmond	ARR 3.46			DEP 11.08
		DEP 3.51			Tue & Sat
572	Nonda	DEP 4.55	589	Hughenden	ARR 12.57am
648	Julia Creek	ARR 6.05			DEP 1.20
		DEP 6.15	679	Torrens Creek	DEP 2.47
719	Oorindi	DEP 7.17	765	Homestead	DEP 4.18
780	Cloncurry	ARR 8.18	839	Charters Towers	ARR 5.32
		DEP 8.35			DEP 5.37
890	Duchess	DEP 10.28	920	Reid River	DEP 7.05
977	Mount Isa	ARR 11.50am	977	Townsville	ARR 8.15am



Mt Isa

FARES

FROM TOWNSVILLE TO	First Berth ADULT	First Berth HALF	Economy Berth ADULT	Economy Berth HALF	Sitting Car ADULT
Charters Towers	-	-	-	-	15.60
Torrens Creek	-	-	-	-	30.60
Hughenden	92.30	62.15	56.90	37.95	37.90
Richmond	105.90	68.95	65.50	42.25	46.50
Julia Creek	120.90	76.00	74.30	46.65	55.30
Cloncurry	137.10	84.55	85.20	52.10	66.20
Mount Isa	156.20	94.10	101.70	60.35	82.70

TRAVEL FACILITIES AND SERVICES

SLEEPING BERTHS: These are provided for both First and Economy Class Travel.

FIRST CLASS TWINETTES: Consist of two-berth compartments each containing two wardrobes, washbasin, towels, full-length mirror, power point (240 volt A.C.), reading lights and bedding.

ECONOMY CLASS SLEEPING CARS: Consist of three-berth compartments each containing a washbasin, towels, power point (240 volt A.C.) and reading lights. A pillow, pillow slip and blanket are provided for each berth.

SHOWERS: Showers are provided at the end of all sleeping cars.

TOILETS: Are provided at the end of all sleeping cars and sitting cars.

SITTING CARS: (Economy Class) Have been constructed as open saloon cars with overhead luggage racks and individual reading lights. Each seat may be reclined to the desired position by pressing a button in the armrest.

FOOD BAR CAR: Light refreshments, including grills, drinks, confectionery and ice-cream are available from the Food Bar Car. A restricted liquor service is available in the Food Bar Car.

PASSENGER'S LUGGAGE: Is conveyed free of charge up to 80kg irrespective of the class of travel. Luggage will be accepted up to 30 minutes prior to departure.

RESERVATIONS: Sleeper or seat reservations may be made six months in advance. Smoking or non-smoking accommodation may be nominated in both Sleeping and Sitting Cars.

CONCESSIONAL FARES: Half fares apply to:-

CHILDREN: Four years and under sixteen years of age.

STUDENTS: Sixteen and over in possession of a current Railways of Australia Student Identification Card.

PENSIONERS: (QUEENSLAND RESIDENTS ONLY) Presenting a current Transport Concession Card (TC1).

NOTE: Students and Pensioners must carry their Identification or Transport Concession Card on the train.

TRAVEL RESTRICTIONS: Break of journey is permitted provided the journey is completed within the time specified below:-

SINGLE TICKETS	DISTANCE	AVAILABILITY
	1- 500 km	5 Days
	501-1000 km	10 Days
	over-1000 km	14 Days

Not including Sundays whether the day of issue or otherwise.

RETURN TICKETS

The forward journey is the same as for single tickets. The return journey must be completed within two months from the date of commencement of the forward journey.

NOTE: See page 35 for passenger stops and restrictions.

CANCELLATION: If travel is unable to be undertaken after the tickets have been issued cancellation fees may apply. Therefore it is imperative that unwanted reservations be cancelled promptly.

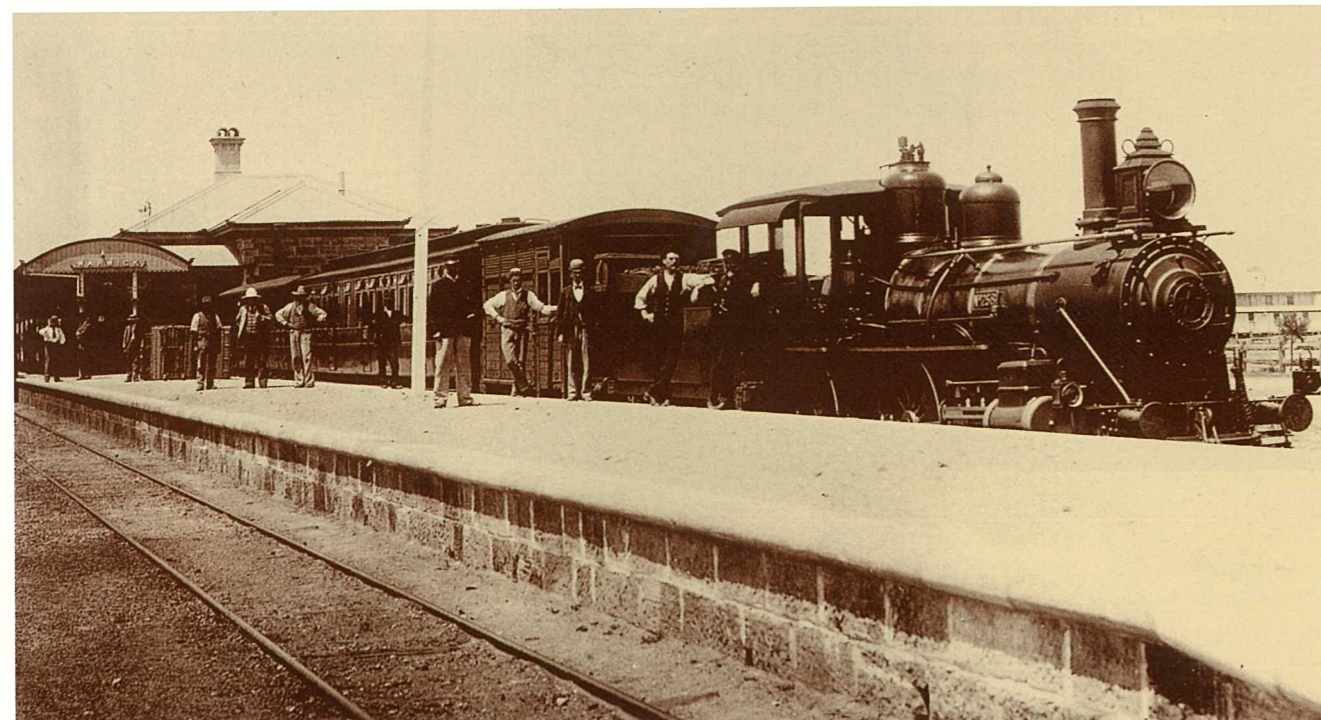
BRISBANE TO DIRRANBANDI

Km from Brisbane		Mon and Thur	Tue & Fri
-	Brisbane (Roma Street)..... DEP	6.30pm	
11	Corinda..... DEP	6.43	
38	Ipswich..... DEP	7.11	
115	Helidon..... DEP	8.41	
161	Toowoomba..... ARR	10.04	
		10.40	
214	Clifton..... DEP	11.55	
		Tue & Fri	
255	Warwick..... ARR	12.46am	
		1.15	
373	Inglewood..... ARR	4.08	
		4.35	
457	Goondiwindi..... ARR	6.17	
		6.52	
502	Toobeah..... DEP	8.25	
605	Thallon..... DEP	12.20pm	
668	Dirranbandi..... ARR	2.06pm	

DIRRANBANDI TO BRISBANE

Km from Dirranbandi		Tue and Fri	Wed & Sat
-	Dirranbandi..... DEP	5.10pm	
63	Thallon..... DEP	9.30	
			1.00am
166	Toobeah..... DEP	2.13am	
211	Goondiwindi..... ARR	2.50	
		4.56	
295	Inglewood..... ARR	5.40	
		9.11	
413	Warwick..... ARR	10.00	
		11.03	
454	Clifton..... DEP	12.55pm	
507	Toowoomba..... ARR		

Train service terminates on arrival at Toowoomba.
Connections to Helidon, Gatton, Ipswich and Brisbane available with McCaffertys Coachlines "Metro Link" (Coach to Ipswich and Citytrain to Brisbane).



Warwick Station, circa 1900

FARES

FROM BRISBANE TO	First Berth ADULT	First Berth HALF	Economy Berth ADULT	Economy Berth HALF	Sitting Car ADULT
Toowoomba	-	-	-	-	15.40
Warwick	76.10	54.05	46.80	32.90	27.80
Inglewood	89.10	60.55	55.00	37.00	36.00
Goondiwindi	100.10	66.05	61.90	40.45	42.90
Thallon	120.00	76.00	74.30	46.65	55.30
Dirranbandi	125.90	78.95	78.10	48.55	59.10

TOOWOOMBA TO BRISBANE CO-ORDINATED SINGLE FARES*

ADULT	\$11.70
PENSIONER	\$8.45
STUDENT 16 YEARS AND OVER	\$8.45
CHILD UNDER 16 YEARS	\$5.85

* Co-ordinated fares are one class only.

TRAVEL FACILITIES AND SERVICES

THE DIRRANBANDI MAIL is a Freight Train with two non air-conditioned wooden carriages attached. On the return journey from Dirranbandi the train terminates at Toowoomba where passengers bound for Brisbane change to a co-ordinated service utilising coach travel to Ipswich and Electric Citytrain to Brisbane.

SLEEPING BERTHS: These are provided for both First and Economy Class travel.

FIRST CLASS TWINETTES: Consist of two-berth compartments each containing two wardrobes, washbasin, towels, mirror, reading lights, electric fan and bedding.

ECONOMY CLASS SLEEPING CARS: Consist of three-berth compartments each containing a washbasin, towels, mirror, reading lights and electric fan. Bed linen and blankets are NOT provided.

NOTE: There are no showers or hot water in both First and Economy Class Sleeping and Sitting Cars.

TOILETS: Are provided at the end of the sleeping and sitting cars.

SITTING CAR: (Economy Class) The carriage has been constructed as a compartment car with a side corridor. The seats do not recline.

REFRESHMENTS: On either the forward or return journey ample time is provided for passengers to purchase refreshments at the Toowoomba and Goondiwindi Railway Refreshment Rooms located on the Station Platform.

CO-ORDINATED SERVICE: (Toowoomba to Brisbane) The contractor's road coach will pick-up and set down at Helidon and Gatton Railway Stations. Passengers are to pay the appropriate fare to the coach driver for the journey between Toowoomba and Ipswich. A rail ticket is to be purchased from the Ticket Office at Ipswich Station for the required Citytrain journey.

PASSENGER'S LUGGAGE: Is conveyed free of charge up to 80kg irrespective of the class of travel. Luggage will be accepted up to 30 minutes prior to departure.

CONCESSIONAL FARES: Half fares apply to:-

CHILDREN: Four years and under sixteen years of age.

STUDENTS: Sixteen and over in possession of a current Railways of Australia Student Identification Card.

PENSIONERS: (QUEENSLAND RESIDENTS ONLY) Presenting a current Transport Concession Card (TC1).

NOTE: Students and Pensioners must carry their Identification or Transport Concession Card on the train.

TRAVEL RESTRICTIONS: Break of journey is permitted provided the journey is completed within the time specified below:-

SINGLE TICKETS	DISTANCE	AVAILABILITY
	1- 500 km	5 Days
	501-1000 km	10 Days
	over-1000 km	14 Days

Not including Sundays whether the day of issue or otherwise.

RETURN TICKETS

The forward journey is the same as for single tickets. The return journey must be completed within two months from the date of commencement of the forward journey.

NOTE: The "Dirranbandi Mail" conveys passengers from Roma Street, Corinda and Ipswich to Dirranbandi and will stop as required to pick-up or set down passengers between Ipswich and Dirranbandi.

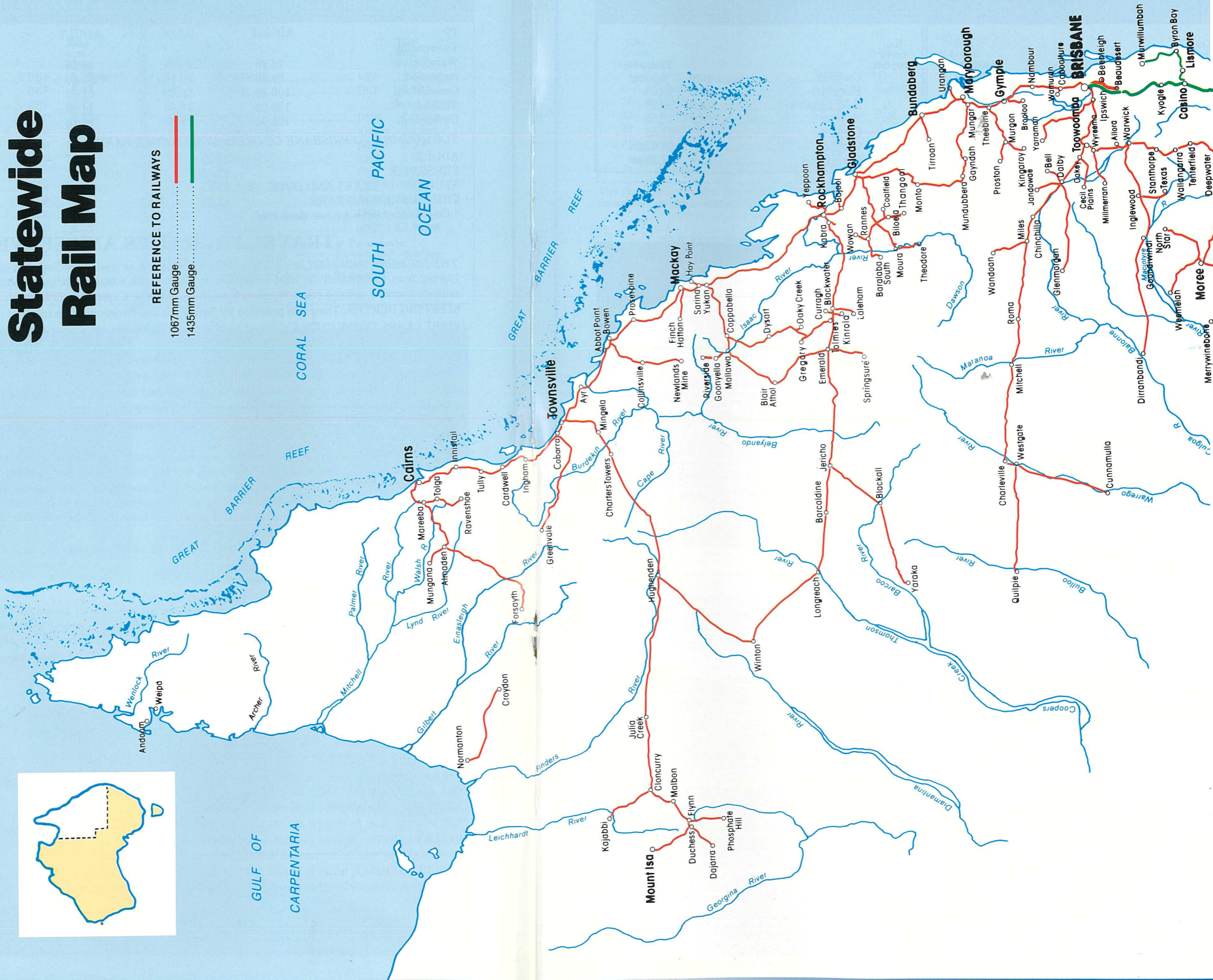
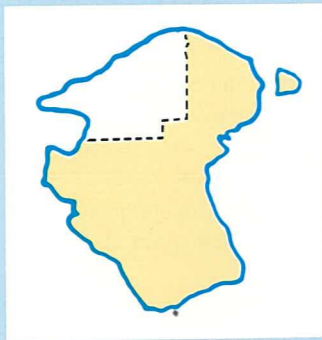
RESERVATIONS: Sleeper or seat reservations may be made six months in advance. Smoking or non-smoking accommodation may be nominated in both Sleeping and Sitting Cars.

CANCELLATION: If travel is unable to be undertaken after the tickets have been issued cancellation fees may apply. Therefore it is imperative that unwanted reservations be cancelled promptly.



Statewide Rail Map

REFERENCE TO RAILWAYS
1067mm Gauge
1435mm Gauge



FORSAYTH — CAIRNS

Km from Cairns		Wednesday	Thursday	Friday	Saturday
-	Cairns	DEP 7.00pm		6.30am	
12	Redlynch	DEP 7.25		9.30	
32	Kuranda	DEP 8.40		10.45am	
74	Mareeba	ARR 9.53pm		12.45pm	
				1.30	
	Mareeba	DEP 12.15am		2.12	
117	Dimbulah	DEP 2.15		3.00	
164	Lappa	DEP 4.22		3.37	
194	Almaden	ARR 5.27		4.24	
		DEP 6.30		5.50	
225	Gelaro	DEP 7.52		7.00	
246	Bullock Creek	DEP 8.47		8.12	
263	Lyndbrook	DEP 9.29		10.10	
282	Frehurst	DEP 10.11		11.30pm	
302	Mount Surprise	ARR 10.51			
		DEP 11.35am			
357	Einaleigh	ARR 1.35pm			
		DEP 3.00			
423	Forsayth	ARR 6.00pm			

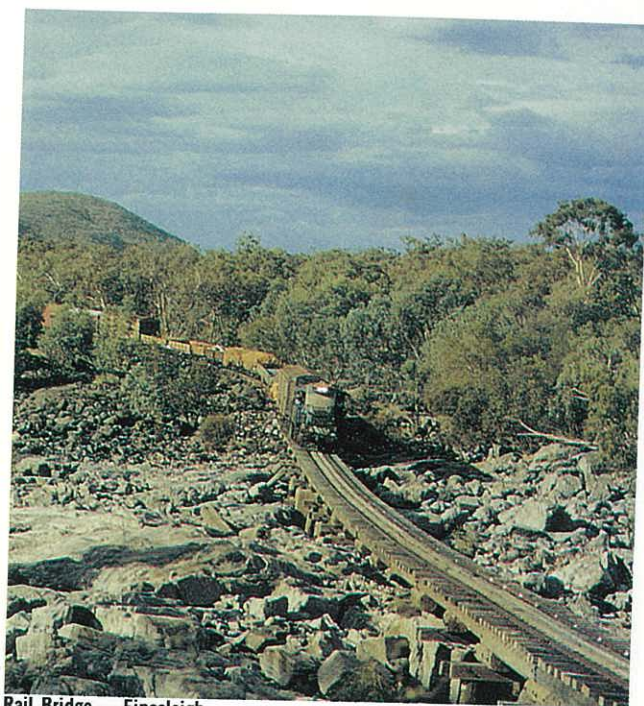
FARES

FROM CAIRNS TO	ADULT	HALF
Mareeba	\$8.20	\$4.10
Almaden	\$21.80	\$10.90
Mount Surprise	\$32.60	\$16.30
Einaleigh	\$34.50	\$17.25
Forsayth	\$50.00*	\$25.00*

* Special Arbitrary Fare

PLEASE NOTE

The above service is a Freight Train with a wooden Economy Class Sitting Car attached. As such the schedule is subject to cancellation or alteration without notice. Passengers intending to travel on this train are requested to seek confirmation of the service by contacting Queensland Railways - Cairns. PHONE: (070) 52 6249.



Rail Bridge - Einaleigh

LINGO
North Queensland Style

It's a good idea to know something about the lingo of the back country up north when you head out bush. Having the ability to sprinkle your conversation with sayings and quips from the country stands you out as a man of the world, a formidable exponent of the outback bon mot.

Outlined below is a brief guide to this most important aspect of outback survival. Get the hang of it and you'll be a big hit when a bout of witty repartee is called for.

Dough banger: Station cook. Comes from the fact that they are always banging dough (making bread or damper).

Square hook or diamond-hook: Usually what fishing nets are referred to as when used illegally. "Put the square hook in last night."

Overland trout: Goannas.

Lizards, underwater goannas: Crocodiles.

Micky: Unbranded wild bull up to about two years of age.

Put my brand on her: What a bloke might say when getting serious about a female.

Got her branded and earmarked: Usually means he got married to her.

She's got me hobbled: What he says after he's got married and she's got him under the thumb.

Got my windbreak with me: Usually means he's out camping and has his wife with him. Definitely a no-no with feminists.

Choke down: What a bloke does when he goes to sleep after a heavy drinking session. "Fred's choked down." You can get away with saying "Fred's choked". Everybody will know what you're talking about.

Rum'n'choke: Rum and Coke.

Bush champagne: Methylated spirits and Sal Vital.

Blue dog, bluey: Foster's beer.

Barbwire stubby: XXXX beer.

Terrorist: Name given to tourists who shoot at anything that moves.

Red-eyed bream: Usual name given to barramundi caught during the closed season.

Mexicans: Anybody who lives south of the Gulf Country.

Hanging dog: Dog used to run down wild cattle.

Good man: Does not refer to the bloke who goes to church on Sunday or dotes on his wife and kids or who is generally a pillar of the community. Refers to a bloke who can ride a rough horse, find his way around in the bush, fix an engine, throw a bull. "Good man that bloke."

Scrub: Rainforest.

Ringer: Stockman.

John Wayne: Flash ringer.

Crossbar motel: Jail.

TOOWOOMBA — ROMA

Km from Toowoomba		Mon Wed Fri	Tue and Thur
-	Toowoomba	DEP* 1.00pm	8.00am
19.75	Kingsthorpe	DEP 1.26	8.34
30.50	Oakey	DEP 1.36	9.29
83.19	Dalby	DEP 2.36	10.09
144.11	Brigalow	DEP 3.41	11.08
164.04	Chinchilla	DEP 4.14	11.27
209.29	Miles	DEP 5.00	12.29pm
251.97	Dulacca	DEP 5.43	1.34
310.72	Wallumbilla	DEP 6.45	1.47
350.34	Roma	ARR 7.23pm	2.18pm

* Metro-Link available from Brisbane to Toowoomba

* Metro-Link available from Toowoomba to Brisbane

TOWNSVILLE — BOWEN

Km from Townsville		Tue Wed Thur	Wed Thur Fri
-	Townsville	DEP 3.30pm	5.45am
10.17	Stuart	DEP 3.46	5.57
19.93	Nome	DEP 4.00	6.22
47.63	Giru	DEP 4.35	6.58
71.49	Pioneer	DEP 5.02	7.42
80.84	Ayr	DEP 5.17	8.00
91.91	Home Hill	DEP 5.34	8.12
129.99	Gumlu	DEP 6.17	8.39
163.33	Wilmington	DEP 6.52	9.15
184.62	Merinda	DEP 7.18	9.30
191.43	Bowen	ARR 7.30pm	9.45am

TOWNSVILLE — CHARTERS TOWERS

Km from Townsville		Fri	Mon
-	Townsville	DEP 5.30pm	6.00am
10.17	Stuart	DEP 5.46	6.18
19.66	Antill Plains	DEP 5.59	6.36
38.02	Woodstock	DEP 6.16	6.49
46.69	Calcium	DEP 6.23	7.01
57.25	Reid River	DEP 6.35	7.11
68.91	Woldston	DEP 6.47	7.25
79.71	Houghton Valley	DEP 6.58	7.35
91.81	Mingela	DEP 7.13	7.44
102.21	Eneby	DEP 7.24	8.00
120.19	Sellheim	DEP 7.42	8.15
138.29	Charters Towers	ARR 8.00pm	8.30am

N.B. Only Economy Class Seats are available on these services. Reservations are not available.

CONDITIONS FOR SEAT AND SLEEPING BERTH RESERVATIONS

The Traveltrains on which passengers must reserve their seats or sleeping berths are:

Days of running

9.10 a.m.
Queenslander
Brisbane to Cairns
Sundays.

Conditions for seat and sleeping berth reservations

Reservation compulsory conveys:

First Class sleeping passengers from Roma Street, Caboolture, Nambour, Gympie North, Maryborough West, Bundaberg, Gladstone and Rockhampton.

To Mackay, Proserpine, Bowen, Home Hill, Ayr, Townsville, Ingham, Tully, Innisfail and Cairns.

Economy Sitting Passengers,

From Roma Street, Caboolture, Nambour and Gympie North.

To Maryborough West, Bundaberg, Gladstone, Rockhampton, St. Lawrence, Sarina, Mackay, Proserpine, Bowen, Home Hill, Ayr, Townsville, Ingham, Tully, Innisfail and Cairns.

From Maryborough West, Bundaberg, Gladstone, Rockhampton, St. Lawrence, Sarina, Mackay, Proserpine, Bowen, Home Hill, Ayr, Townsville, Ingham, Tully and Innisfail.

To Bundaberg, Gladstone, Rockhampton, St. Lawrence, Sarina, Mackay, Proserpine, Bowen, Home Hill, Ayr, Townsville, Ingham, Tully, Innisfail and Cairns.

8.15 a.m.
Queenslander
Cairns to Brisbane
Tuesdays.

Reservation compulsory conveys:

First Class sleeping passengers from Cairns, Innisfail, Tully, Ingham, Townsville, Ayr, Home Hill, Bowen, Proserpine and Mackay.

To Rockhampton, Gladstone, Bundaberg, Maryborough West, Gympie North, Nambour, Caboolture and Roma Street.

Economy Sitting Passengers,

From Cairns, Innisfail, Tully, Ingham, Townsville, Ayr, Home Hill, Bowen, Proserpine, Mackay, Sarina, St. Lawrence, Rockhampton, Gladstone, Bundaberg and Maryborough West.

To Innisfail, Ingham, Townsville, Ayr, Home Hill, Bowen, Proserpine, Mackay, Sarina, St. Lawrence, Rockhampton, Gladstone, Bundaberg, Maryborough West, Gympie North, Nambour, Caboolture and Roma Street.

9.10 a.m.
Sunlander
Brisbane to Cairns
Tue., Thur., Sat.

Reservation compulsory, except for passengers travelling Sarina to Mackay.

Conveys passengers:

From Roma Street, Northgate, Petrie, Caboolture.

To all nominated stations north of Rockhampton.

From Roma Street, Northgate, Petrie, Caboolture.

To all nominated stations north of Rockhampton.

From all nominated stations north of Caboolture to Rockhampton.

To all nominated stations north of Rockhampton.

From Rockhampton and all nominated stations north of Rockhampton.

To all nominated stations north of Rockhampton.

7.00 a.m.
Sunlander
Cairns to Brisbane
Mon., Thur., Sat.

Reservation compulsory except for passengers travelling Mackay to Sarina.

Conveys passengers:

From Cairns and nominated stations to Rockhampton.

To nominated stations to Roma Street.

In addition, passengers wishing to travel from Rockhampton, or to travel to or from Gladstone, Bundaberg, Maryborough West and Gympie North or travel to Nambour, Caboolture, Northgate and Roma Street, may book seven (7) days prior to date of travel.

For journeys less than 200km, bookings are restricted to seven (7) days prior to date of travel.

Nominated Stations

Roma Street, Northgate, Caboolture, Nambour, Cooroy, Gympie North, Maryborough West, Bundaberg, Rosedale, Miriam Vale, Bororen, Benaraby, Gladstone, Mt. Larcom, Bajool, Rockhampton, Marlborough, Ogmoo, St. Lawrence, Carmila, Koumala, Sarina, Mackay, Calen, Bloomsbury, Proserpine, Bowen, Guthalungra, Gumlu, Home Hill, Ayr, Giru, Townsville, Ingham, Cardwell, Kennedy, Tully, El Arish, Innisfail, Babinda, Gordonvale and Cairns.

8.15 a.m.
Spirit of Capricorn
Brisbane to Rockhampton
Daily

The "Spirit of Capricorn" services will stop at the following nominated station to set down and pick up passengers as required. Brisbane (Roma Street), Caboolture, Landsborough, Nambour, Cooroy, Gympie North, Maryborough West, Bundaberg, Miriam Vale, Gladstone, Mt Larcom and Rockhampton. The following travel restrictions will apply:

From Brisbane, Caboolture, Landsborough and Nambour.

To Cooroy and all nominated stations to Rockhampton.

From Cooroy and all nominated stations to Rockhampton.

To all nominated stations north of Cooroy to Rockhampton.

From Rockhampton and all nominated stations to Cooroy.

To all nominated stations from Rockhampton to Brisbane.

NOTE: In addition a stop may be made at Howard to pick up or set down passengers pre-booked before the departure of the services from Brisbane or Rockhampton.

7.50 p.m.
Capricornian
Brisbane to Rockhampton
Thur., Fri., Sun.

Reservation compulsory
Conveys passengers:

From Roma Street, Northgate, Petrie, Caboolture and all intermediate stations to Rockhampton.

To Gympie and all stations north of Rockhampton.

7.00 p.m.
Capricornian
Rockhampton to Brisbane
Thur., Fri., Sun.

From Rockhampton and all intermediate stations to Yandina inclusive.

To all stations south of Rockhampton to Caboolture inclusive, Petrie, Northgate and Roma Street.

5.55 p.m.
Westlander
Brisbane to Charleville,
Cunnamulla and Quilpie
Mon., Thur.

Reservation compulsory.

Conveys passengers from Roma Street, Corinda (if required), Ipswich, Rosewood, Grandchester, Laidley, Gatton and Helidon (if required) for stations Toowoomba and beyond. This train will also stop as required at stations Lockyer to Rangeview inclusive to pick up passengers for Toowoomba and beyond. At stations beyond Toowoomba this train will stop as required to pick up or set down passengers. Passengers desiring to detrain at stations east of Roma and whose journey is less than 200km may reserve accommodation without the restriction "on the day of travel only".

5.55 p.m.
Westlander
Cunnamulla to Brisbane
5.25 p.m.
Westlander
Quilpie to Brisbane
Tue., Fri.

Reservation compulsory.

Conveys passengers to or from stations Cunnamulla to Toowoomba inclusive, but will then stop only as required to set down passengers at stations Rangeview to Ipswich inclusive and at Corinda and Roma Street. Passengers desiring to join at Roma or stations east thereof and whose journey is less than 350km may reserve accommodation without the restriction "on the day of travel only".

6.45 p.m.
Midlander
Rockhampton to Winton
Tue., Fri.

Reservation compulsory.

The Midlander will stop as required to pick up or set down passengers between Rockhampton and Winton.

2.45 p.m.
Midlander
Winton to Rockhampton
Wed., Sat.

Reservation compulsory.

The Midlander will stop as required to pick up or set down passengers between Winton and Rockhampton.

6.00 p.m.
Inlander
Townsville to Mount Isa
Sun., Wed.

Reservation compulsory.

The Inlander will stop as required to pick up or set down passengers between Townsville and Mount Isa.

3.00 p.m.
Inlander
Mount Isa to Townsville
Mon., Fri.

Reservation compulsory.

The Inlander will stop as required to pick up or set down passengers between Mount Isa and Townsville.

SUNSHINE RAIL EXPERIENCE

These tours operate from April through to October inclusive.
For further information, prices and reservations contact the Queensland Government Travel Centre.

BRISBANE TO CAIRNS—6 DAYS NORTHBOUND	CAIRNS TO BRISBANE—6 DAYS SOUTHBOUND
<p>Monday Roma Street.....Depart 9.00 a.m. Gympie.....Arrive 12.20 p.m. Ditto.....Depart 12.30 p.m. Maryborough..... 2.30 p.m. Overnight Hervey Bay</p> <p>Tuesday Road Coach Hervey Bay to Bundaberg Bundaberg.....Depart 9.55 a.m. Gladstone.....Arrive 12.55 p.m. Ditto.....Depart 2.15 p.m. Rockhampton.....Arrive 4.00 p.m. Overnight Rockhampton</p> <p>Wednesday Rockhampton.....Depart 9.15 a.m. St. Lawrence.....Arrive 12.40 p.m. (Lunch) Ditto.....Depart 1.50 p.m. Mackay.....Arrive 4.45 p.m. Overnight Mackay</p> <p>Thursday Mackay.....Depart 8.45 a.m. Bowen.....Arrive 12.16 p.m. (Lunch) Ditto.....Depart 2.15 p.m. Townsville.....Arrive 5.40 p.m. Overnight Townsville</p> <p>Friday Magnetic Island Cruise Overnight Townsville</p> <p>Saturday Townsville.....Depart 7.45 a.m. Ingham.....Arrive 9.43 a.m. (Lunch) Ditto.....Depart 1.30 p.m. Tully.....Arrive 3.03 p.m. Ditto.....Depart 3.14 p.m. Cairns.....Arrive 5.50 p.m.</p> <p>CONCLUSION OF DAYLIGHT TOUR</p>	<p>Sunday Cairns.....Depart 8.00 a.m. Tully.....Arrive 10.36 a.m. Ditto.....Depart 10.45 a.m. Ingham.....Arrive 12.15 p.m. (Lunch) Ditto.....Depart 3.40 p.m. Townsville.....Arrive 5.40 p.m. Overnight Townsville</p> <p>Monday Townsville.....Depart 8.35 a.m. Bowen.....Arrive 12.10 p.m. (Lunch) Ditto.....Depart 2.15 p.m. Proserpine.....Arrive 3.24 p.m. Overnight Airlie Beach</p> <p>Tuesday Whitsunday Island Cruise Proserpine.....Depart 3.00 p.m. Mackay.....Arrive 5.22 p.m. Overnight Mackay</p> <p>Wednesday Mackay.....Depart 9.40 a.m. St. Lawrence.....Arrive 12.30 p.m. (Lunch) Ditto.....Depart 1.45 p.m. Rockhampton.....Arrive 5.10 p.m. Overnight Rockhampton</p> <p>Thursday Rockhampton.....Depart 8.30 a.m. Gladstone.....Arrive 10.10 a.m. Ditto.....Depart 11.10 a.m. Bundaberg.....Arrive 2.10 p.m. Road Coach Bundaberg to Hervey Bay</p> <p>Friday Road Coach Hervey Bay to Maryborough Maryborough.....Depart 9.00 a.m. Cooroy.....Arrive 11.52 a.m. Passengers detrain for Bus Tour Palmwoods.....Depart 2.05 p.m. Passengers entrain Roma Street.....Arrive 3.50 p.m.</p> <p>CONCLUSION OF DAYLIGHT TOUR</p>

BRISBANE - SYDNEY

	Km from Brisbane (Direct Rail)	XPT Daily	Km from Surfers Paradise (Combined Coach/Rail)	Road Coach Daily	Km from Brisbane (Combined Coach/Rail)	Road Coach Daily
Brisbane — Roma Street Station	-	DEP 7.40am	-	-	-	-
Brisbane Transit Centre	-	DEP -	-	-	-	6.10pm
Bromelton	63	DEP 8.28 (A)	-	-	-	-
Kyogle	153	DEP 9.51	-	-	-	-
Beenleigh Station	-	DEP -	-	-	38	6.45
Surfers Paradise	-	DEP -	-	7.00am	83	7.31
Burleigh Heads	-	DEP -	10	7.20	99	7.49
Tweed Heads	-	DEP -	26	7.40	109	8.05
South Tweed Heads	-	DEP -	28	7.45	110	8.09
Chinderah	-	DEP -	35	7.50	118	8.15
Murwillumbah	-	ARR -	56	8.00am	139	8.30pm
						Change to XPT Daily
Murwillumbah	-	DEP -	-	8.05	-	9.15pm
Mullumbimby	-	DEP -	93	8.40	176	9.52
Byron Bay	-	DEP -	108	-	191	10.06
Lismore	-	DEP -	181	9.40	238	10.53
Casino	184	ARR 10.16	212	10.05am	269	11.27
						Change to XPT Daily
Casino	-	DEP 10.18am	-	10.18am	-	11.29
Grafton City	293	ARR 11.37	321	11.37	378	12.56am
						1.02
Coffs Harbour	380	DEP 1.10	409	1.10	466	2.18
Macksville	437	DEP 1.51	465	1.51	522	-
Kempsey	485	DEP 2.38	513	2.38	570	3.43
Wauchope	534	DEP 3.15	562	3.15	619	4.20
Taree	610	DEP 4.24	638	4.24	695	5.28
Wingham	622	DEP 4.35	6.50	4.35	707	-
Gloucester	680	DEP 5.24	708	5.24	765	-
Dungog	744	DEP 6.21	762	6.21	819	-
Maitland	795	DEP 7.10	825	7.10	882	8.11
Broadmeadow	826	ARR 7.30	854	7.30	911	8.29
						8.31
Gosford	909	DEP 8.27	937	8.27	994	9.25
Hornsby	956	DEP 9.07	984	9.07	1041	10.05
Strathfield	976	DEP 9.28	1004	9.28	1061	-
Sydney	989	ARR 9.40pm	1017	9.40pm	1074	10.35am



XPT near Grafton

SYDNEY - BRISBANE

Station	Km from Sydney (Direct Rail)		XPT Daily	Km from Sydney (Combined Rail/Coach)		XPT Daily	Km from Sydney (Combined Rail/Coach)		XPT Daily
	DEP	ARR		DEP	ARR		DEP	ARR	
Sydney	-	-	4.15pm	-	-	4.15pm	-	-	7.15am
Strathfield	13	-	-	13	-	-	13	-	7.28
Hornsby	33	DEP	4.51	33	4.51	4.51	33	7.48	7.48
Gosford	80	DEP	5.38	80	5.38	5.38	80	8.28	8.28
Broadmeadow	163	ARR	6.30	163	6.30	6.30	163	9.22	9.22
Maitland	194	DEP	6.58	194	6.58	6.58	194	9.24	9.24
Dungog	245	DEP	-	245	-	-	245	9.46	9.46
Gloucester	309	DEP	-	309	-	-	309	10.29	10.29
Wingham	367	DEP	-	367	-	-	367	11.22	11.22
Taree	379	DEP	9.40	379	9.40	9.40	379	12.11pm	12.11pm
Wauchope	455	DEP	10.43	455	10.43	10.43	455	12.29	12.29
Kempsey	504	DEP	11.21	504	11.21	11.21	504	1.32	1.32
Macksville	552	DEP	11.58 (A)	552	11.58 (A)	11.58 (A)	552	2.09	2.09
Coffs Harbour	609	DEP	12.45am	609	12.45am	12.45am	609	2.48	2.48
Grafton City	696	ARR	2.03	696	2.03	2.03	696	3.31	3.31
Casino	805	ARR	3.29	805	3.29am	3.29am	805	4.46	4.46
					Change to Road Coach Daily			4.52	4.52
Casino	-	DEP	3.31	-	3.40am	3.40am	-	6.18	6.18
Lismore	-	DEP	-	836	4.05	4.05	836	6.47	6.47
Byron Bay	-	DEP	-	883	-	-	883	7.32	7.32
Mullumbimby	-	DEP	-	898	5.05	5.05	898	7.47	7.47
Murwillumbah	-	ARR	-	935	5.30	5.30	935	8.30pm	8.30pm
					Change to Road Coach Daily			8.45pm	8.45pm
Murwillumbah	-	DEP	-	-	5.40	5.40	-	9.00	9.00
Chinderah	-	DEP	-	956	5.55	5.55	956	9.06	9.06
South Tweed Heads	-	DEP	-	964	6.00	6.00	964	9.10	9.10
Tweed Heads	-	DEP	-	965	6.05	6.05	965	9.26	9.26
Burleigh Heads	-	DEP	-	981	6.25	6.25	981	9.44	9.44
Surfers Paradise	-	DEP	-	991	ARR 6.45am	6.45am	991	10.30	10.30
Beenleigh Station	-	DEP	-	-	-	-	1036	-	-
Kyogle	834	DEP	3.58	-	-	-	-	-	-
Bromelton	926	DEP	5.17 (A)	-	-	-	-	-	-
Brisbane -	-	-	-	-	-	-	-	-	-
Roma Street Station	989	ARR	6.15am	-	-	-	-	-	-
Brisbane Transit Centre	-	ARR	-	-	-	-	1074	11.05pm	11.05pm

(A) Stops only as required.

TRAVEL FACILITIES AND SERVICES

SITTING CARS: (First and Economy Class) have been constructed as open saloon cars with overhead luggage racks and individual reading lights.

FIRST CLASS SEATS feature a reclining back which is adjustable to three positions and a special footrest for added comfort.

ECONOMY CLASS SEATS can be adjusted for extra comfort by lifting the small lever under the armrest thus allowing the seat base to slide forward.

TOILETS are provided at the end of each sitting car.

ROAD COACHES (STATE RAIL AUTHORITY OF N.S.W.) provide one-class accommodation and are fully air-conditioned with reclining seats. Smoking and the consumption of alcohol is not permitted. Coach arrives and departs from the 3rd level of the Brisbane Transit Centre. "City Explorer Tours" on this level is the official check-in point.

REFRESHMENTS: Meals, snacks and beverages together with liquor may be purchased in the buffet car located in the centre of the train.

PASSENGER'S LUGGAGE: Each XPT carriage has overhead luggage racks plus, at the end of each carriage, shelves for additional luggage. Passenger's luggage is conveyed free of charge and will be accepted up to 30 minutes prior to departure. Items such as unaccompanied luggage, bicycles, surfboards and animals etc will not be permitted on the XPT services as baggage space on these trains is limited.

RESERVATIONS: Seat reservations for Interstate journey may be made 12 months in advance. However, restrictions do apply for short journeys. Passengers wishing to travel only on the road coach (e.g. Brisbane to Surfers Paradise) are restricted in making reservations to the day prior to travel. Smoking and non-smoking accommodation may be nominated in both first and economy sitting cars.

FARES

STATIONS	FROM BRISBANE TO		COMBINED ROAD COACH AND RAIL		FROM SURFERS PARADISE TO	
	DIRECT RAIL		COMBINED ROAD COACH AND RAIL		COMBINED ROAD COACH AND RAIL	
	First	Economy	First	Economy	First	Economy
Surfers Paradise	-	-	-	10.00	-	-
Burleigh Heads	-	-	-	11.20	-	1.20
Tweed Heads	-	-	-	12.00	-	2.00
South Tweed Heads	-	-	-	13.00	-	3.00
Chinderah	-	-	-	13.00	-	3.00
Murwillumbah	-	-	-	15.70	-	5.70
Mullumbimby	-	-	19.30	18.00	9.30	8.00
Byron Bay	-	-	20.70	19.00	10.70	9.00
Lismore	-	-	29.80	25.90	19.80	15.90
Casino	30.50	20.70	31.10	25.90	21.10	15.90
Grafton City	43.60	30.30	44.40	35.90	34.40	25.90
Coffs Harbour	53.10	37.00	54.80	43.40	44.80	33.40
Kempsey	65.80	46.00	67.00	51.60	57.00	41.60
Wauchope	71.80	50.30	70.90	54.00	60.90	44.00
Taree	80.00	56.00	78.20	59.40	68.20	49.40
Maitland	90.80	63.80	83.60	62.40	73.60	52.40
Broadmeadow	95.10	66.80	88.70	66.20	78.70	56.20
Hornsby	120.00	85.00	115.00	85.00	83.70	59.60
Sydney	120.00	85.00	115.00	85.00	83.70	59.60
Murwillumbah to Sydney	83.70	59.60				
Bromelton to Sydney	120.00	85.00				

N.B. JOURNEY DEFINITION

INTERSTATE: For travel between Brisbane and Interstate stations via Kyogle or between Brisbane, Beenleigh and Interstate stations via Murwillumbah or vice versa.

INTRASTATE: For travel between Surfers Paradise, Burleigh Heads, Tweed Heads and N.S.W. stations via Murwillumbah or vice versa.

CONCESSIONAL FARES: Half fares apply to:-

CHILDREN: Four years of age and under sixteen years of age. A child under 4 years occupying a seat also pays half fare.

STUDENTS: Sixteen years of age and over in possession of a current Railways of Australia Student Identification Card.

PENSIONERS: Travelling from Brisbane or Beenleigh to stations beyond Surfers Paradise or from Brisbane to N.S.W. stations on the main trunk route via Kyogle or if travelling from Surfers Paradise to a destination on a main trunk route in Victoria, South Australia and Western Australia half fare concessions will apply.

NOTE: Both students and pensioners must carry their identification or Health Benefits Card.

CAPER FARES: Special advance purchase fares are available to full fare paying passengers.

TRAVEL RESTRICTIONS: A break in journey is permitted at any station en route for:-

SINGLE TICKETS: The journey must be commenced on the date stamped on the ticket and be completed within two months.

RETURN TICKETS: The forward journey is the same as for a single ticket. Return journey must be completed within six months.

RECONFIRMATION: Passengers are requested to reconfirm their reservation 24 hours prior to the train's departure.

CANCELLATION: If travel is unable to be undertaken after the tickets have been issued cancellation fees may apply. Therefore it is imperative that unwanted reservations be cancelled promptly.

SYDNEY - MELBOURNE

Km from Sydney		Intercapital Daylight Mon to Sat	Riverina XPT Daily	Melbourne Express Daily
-	Sydney	7.45am	12.40pm	8.00pm
51	Campbelltown..... DEP	8.36	1.22	8.49
143	Moss Vale	9.56	2.24	10.05
222	Goulburn..... ARR	10.51	3.13	11.01
	Yass Junction	10.53	3.15	11.11
315	Harden..... DEP	12.11pm	4.20	12.27am
383	Cootamundra..... DEP	1.12	5.15	1.25
427	Junee	1.53	5.39	2.04
483	Wagga Wagga..... DEP	2.40	6.13	2.48
	Henty..... DEP	2.44	6.15	2.58
518	Albury..... ARR	3.11	6.38	3.27
577	Wangaratta..... DEP	3.52	7.10	4.03
643	Benalla..... DEP	4.30	7.50pm	4.50
	Melbourne (Spencer Street)..... ARR	4.40	-	5.00
715		-	-	5.52
754		-	-	6.23
960		8.20pm	-	9.00am

MELBOURNE - SYDNEY

Km from Melbourne		Intercapital Daylight Mon to Sat	Riverina XPT Daily	Sydney Express Daily
-	Melbourne (Spencer Street)..... DEP	7.35am	-	8.00pm
12	Sunshine..... ARR	7.51	-	-
	Benalla..... DEP	7.55	-	-
206	Wangaratta..... DEP	-	-	10.25
245	Albury..... ARR	11.35	-	10.54
317	Henty..... DEP	11.40	7.30am	11.59
376	Wagga Wagga..... DEP	12.20pm	8.05	12.10am
443	Junee..... ARR	12.58	8.37	12.50
478	Cootamundra..... DEP	1.24	9.00	1.32
	Harden..... DEP	1.28	9.02	1.59
534	Yass Junction..... DEP	2.16	9.44	2.09
568	Goulburn..... ARR	2.53	10.20	2.59
646	Moss Vale..... DEP	3.48	11.08	3.37
739	Campbelltown..... DEP	5.03	12.14pm	4.33
	Sydney..... ARR	5.05	12.16	5.49
818		5.57	1.03	5.56
910		7.04	2.10	6.50
960		8.00pm	2.57pm	7.59



The Sydney/Melbourne Express provides comfortable overnight travel between the two State capital cities.

FARES

FROM SYDNEY TO	First Class SINGLE	First Class RETURN	Economy Class SINGLE	Economy Class RETURN
Goulburn	26.90	53.80	19.10	38.20
Yass Junction	39.10	78.20	27.70	55.40
Cootamundra	53.20	106.40	37.80	75.60
Junee	58.50	117.00	41.60	83.20
Wagga Wagga	61.70	123.40	44.00	88.00
Albury	69.30	138.60	49.40	98.80
Melbourne	116.00	232.00	80.00	160.00
Brisbane-Albury (via Kyogle)	189.30	378.60	134.40	268.80
Brisbane-Melbourne (via Kyogle)	236.00	472.00	165.00	330.00
Murwillumbah-Melbourne	199.70	399.40	139.60	279.20

The above are sit-up fares and do not include Sleeping Berth fees which are \$50.00 per berth per night. (Additional to the First Class Fares above.)

TRAVEL FACILITIES AND SERVICES

SLEEPING BERTHS: These are provided for First Class travel ONLY on the Melbourne and Sydney Expresses.

FIRST CLASS DELUX: This is a spacious compartment containing a three-quarter bed and an upper Sleeping berth, ensuite shower and toilet, washbasin, hot and cold water, lounge chairs, wardrobes, vanity mirrors, power point (240 volt A.C.), towels, bedding and reading lights. (Compartment fee \$200.00. Minimum - 2 Adults First Class passengers.)

FIRST CLASS TWINETTES: Consist of two-berth compartments each containing two wardrobes, ensuite shower and toilet, washbasin, hot and cold water, vanity mirrors, power point (240 volt A.C.), towels, bedding and reading lights. A Family cabin consisting of two twinettes with a connecting door is also available.

FIRST CLASS ROOMETTES: Consist of single-berth compartments each containing a wardrobe, washbasin, hot and cold water, towel, power point (240 volt A.C.), toilet facilities, vanity mirrors and bedding. Hot and cold showers are situated at the end of the car. NOTE: There is no single supplement charge for roomettes.

BREAKFAST: Sleeping berth passengers will be served a complimentary light continental breakfast in their cabins. First class sitting passengers can purchase a continental breakfast from the lounge car.

SITTING CARS: (First and Economy) Have been constructed as open saloon cars with overhead luggage racks and individual reading lights. Each seat may be reclined to the desired position by pressing a button in the armrest.

DINING CAR SERVICE: A Dining Car, available to all First Class passengers, is attached to the Melbourne and Sydney Expresses where liquor and a full meal service (a la carte) is available.

BUFFET SERVICE: A Buffet Car, available ONLY to Economy Class passengers, is attached to the Intercapital Daylight Express where snacks, light refreshments and liquor can be purchased.

SNACK BAR SERVICE: On all Riverina XPT Services and Melbourne and Sydney Expresses take-away food, liquor and beverages are available.

LOUNGE CAR SERVICE: A Lounge Car, available to all First Class passengers, is attached to the Melbourne and Sydney Expresses from where passengers can purchase snacks, liquor and beverages.

PASSENGER'S LUGGAGE: Is conveyed free of charge up to 80kg irrespective of the class of travel bearing in mind that space in the Roomettes is limited. Luggage will be accepted up to 30 minutes prior to departure.

RESERVATIONS: Sleeper or Seat reservations for Interstate journeys may be made 12 months in advance. Please refer to the New South Wales State Rail Authority County and Interstate Timetables for travel restrictions concerning intermediate journeys. Smoking or non-smoking accommodation may be nominated in both Sleeping and Sitting Cars.

CONCESSIONAL FARES: Half Fares apply to:

CHILDREN: Four years and under sixteen years of age. A child under 4 years occupying a seat also pays half fare.

STUDENTS: Sixteen years and over in possession of a current Railways of Australia Student Identification Card.

PENSIONERS: Presenting a current Pensioner Health Benefit Card.

NOTE: Students and Pensioners must carry their Identification or Health Benefit Cards on the train.

CAPER FARES: Special advance purchase fares are available to full fare paying passengers. Plan ahead and save up to 30%. Please ask for details when booking.

TRAVEL RESTRICTIONS: A break of journey is permitted at any station enroute for:

SINGLE TICKETS: The journey must be commenced on the date stamped on the ticket and be completed within two months.

RETURN TICKETS: The forward journey is the same as for a single ticket. The return journey must be completed within six months.

RECONFIRMATION: Passengers are requested to reconfirm their reservation 24 hours prior to the train's departure.

CANCELLATION: If travel is unable to be undertaken after the tickets have been issued cancellation fees may apply. Therefore it is imperative that unwanted reservations be cancelled promptly.

MELBOURNE TO ADELAIDE

Km from Melbourne	Daily
- Melbourne (Spencer Street)..... DEP	9.00pm (E.S.T.)
119 Ballarat DEP	11.02
211 Ararat DEP	12.05am
241 Stawell DEP	12.31
298 Murtoa DEP	1.06
327 Horsham DEP	1.30
362 Dimboola DEP	2.15
400 Nhill DEP	2.42
438 Kaniva DEP	3.08
462 Serviceton ARR	3.20
	DEP 3.30
470 Wolsley ARR	3.50 (E.S.T.)
	DEP 3.40 (C.S.T.)
486 Bordertown DEP	3.59
531 Keith DEP	4.41
597 Coonalpyn DEP	5.33
660 Tailem Bend DEP	6.26
683 Murray Bridge DEP	6.53
774 Adelaide ARR	9.05am (C.S.T.)

ADELAIDE TO MELBOURNE

Km from Adelaide	Daily
- Adelaide..... DEP	6.30pm (C.S.T.)
91 Murray Bridge..... DEP	8.50
114 Tailem Bend..... DEP	9.19
177 Coonalpyn DEP	10.00
243 Keith..... DEP	11.02
288 Bordertown DEP	11.47
304 Wolsley ARR	12.15am (C.S.T.)
	DEP 12.55am (E.S.T.)
312 Serviceton..... ARR	1.00am
	DEP 1.07am
336 Kaniva DEP	1.16
374 Nhill DEP	1.42
412 Dimboola..... DEP	2.33
447 Horsham DEP	2.58
476 Murtoa DEP	3.20
533 Stawell DEP	3.58
563 Ararat DEP	4.30
658 Ballarat DEP	5.45
764 Sunshine DEP	7.22 *
774 Melbourne (Spencer Street)..... ARR	7.45am (E.S.T.)

(E.S.T.) Eastern Standard Time

(C.S.T.) Central Standard Time

* Change trains to connect with the Melbourne to Sydney Intercapital Daylight (Mon to Sat)



The Overland near Bacchus Marsh

FARES

FROM MELBOURNE TO	First Class SINGLE	First Class RETURN	Economy Class SINGLE	Economy Class RETURN
Ballarat	12.40	24.80	8.80	17.60
Ararat	24.60	49.20	17.60	35.20
Horsham	37.20	74.40	26.60	53.20
Wolsley	47.90	95.80	34.10	68.20
Bordertown	49.70	99.40	35.30	70.60
Tailem Bend	68.30	136.60	57.00	114.00
Murray Bridge	71.60	143.20	57.00	114.00
Adelaide	80.00	160.00	57.00	114.00

The above are sit-up fares and do not include sleeping berth fees which are \$50.00 per berth per night (additional to the First Class Fares above).

TRAVEL FACILITIES AND SERVICES

SLEEPING BERTHS: These are provided for First Class Travel ONLY.

FIRST CLASS ROOMETTES: Consist of single-berth compartments each containing a wardrobe, washbasin, hot and cold water, towel, power point (240 volt A.C.), toilet facilities, vanity mirror and bedding. Hot and cold showers are situated at the end of the car. NOTE: There is no single supplement charge for roomettes. The First Class Sleeper fare includes a continental breakfast tray.

FIRST CLASS TWINETTES: Consist of two-berth compartments each containing two wardrobes, ensuite shower and toilet, washbasin, hot and cold water, vanity mirrors, power point (240 volt A.C.), towels, bedding and reading light. NOTE: The First Class Sleeper fare includes a continental breakfast tray.

SITTING CARS: (First and Economy) Have been constructed as open saloon cars with overhead luggage racks and individual reading lights. Each seat may be reclined to the desired position by pressing a button in the armrest.

CLUB CAR SERVICE: A Club Car, available to First Class passengers ONLY, is attached to The Overland where liquor and light refreshments can be purchased. First Class sitting passengers may also purchase a continental breakfast tray.

BUFFET CAR SERVICE: A Buffet Car, available to Economy Class passengers, is attached to the Overland where light refreshments can be purchased. The consumption of liquor is not permitted in both the Buffet Car or Economy Class Sitting Cars.

PASSENGER'S LUGGAGE: Is conveyed free of charge up to 80kg irrespective of the class of travel bearing in mind that space in the Roomettes is limited. Luggage will be accepted up to 30 minutes prior to departure.

RESERVATIONS: Sleeper or Seat reservations for Interstate journeys may be made 12 months in advance. Smoking or non-smoking accommodation may be nominated in both Sleeping and Sitting Cars.

CONCESSIONAL FARES: Half fares apply to:

CHILDREN: Four years and under sixteen years of age. A child under 4 years occupying a seat also pays half fare.

STUDENTS: Sixteen years and over in possession of a current Railways of Australia Student Identification Card.

PENSIONERS: Presenting a current Pensioner Health Benefit Card.

NOTE: Students and Pensioners must carry their Identification or Health Benefit Cards on the train.

CAPER FARES: Special advance purchase fares are available to full fare paying passengers. Plan ahead and save up to 30%. Please ask for details when booking.

TRAVEL RESTRICTIONS: A break of journey is permitted at any station enroute for:

SINGLE TICKETS: The journey must be commenced on the date stamped on the ticket and be completed within two months.

RETURN TICKETS: The forward journey is the same as for a single ticket. The return journey must be completed within six months.

RECONFIRMATION: Passengers are requested to reconfirm their reservation 24 hours prior to the train's departure.

CANCELLATION: If travel is unable to be undertaken after the tickets have been issued cancellation fees may apply. Therefore it is imperative that unwanted reservations be cancelled promptly.

MOTORRAIL: Motor vehicles and their contents are conveyed at the owner's risk on The Overland. Motor vehicles and/or trailers must be presented for loading 90 minutes prior to departure. For details concerning vehicle size restrictions and ticketing please ask for when booking.

MOTORRAIL RATES: \$7.00 per vehicle (accompanied).

SYDNEY TO PERTH

PERTH TO SYDNEY

Km from Sydney		Mon, Thur and Sat	Tue, Fri and Sun	Km from Perth		Sun, Tue and Thur	Mon, Wed and Fri
-	Sydney..... DEP	1.30pm (E.S.T.)		-	Perth..... DEP	9.00pm (W.S.T.)	
1125	Broken Hill..... ARR	8.09 (E.S.T.)		659	Kalgoorlie..... ARR	6.00am (W.S.T.)	
	DEP	8.10 (C.S.T.)			DEP	6.30	
1408	Peterborough..... ARR	12.30pm		1527	Cook..... ARR	5.12 (W.S.T.)	
	DEP	12.35			DEP	7.40 (C.S.T.)	
1694	Adelaide..... ARR	5.00 (C.S.T.)					Tue, Thur and Sat
	DEP	5.45		2349	Port Augusta..... ARR	8.53	
1916	Coonamia..... ARR	9.15			DEP	9.05	
	DEP	9.25		2439	Coonamia..... ARR	10.20	
2006	Port Augusta..... ARR	10.45			DEP	10.25	
	DEP	11.00		2661	Adelaide..... ARR	1.50pm	
		Wed, Sat and Mon			DEP	2.35pm	
2828	Cook..... ARR	10.30 (C.S.T.)		2947	Peterborough..... ARR	7.20	
	DEP	9.30 (W.S.T.)			DEP	7.25	
3696	Kalgoorlie..... ARR	9.45		3230	Broken Hill..... ARR	11.40 (C.S.T.)	
	DEP	10.30			DEP	1.00am (E.S.T.)	
		Thur, Sun and Tue		4355	Sydney..... ARR	7.35pm (E.S.T.)	
4355	Perth..... ARR	7.15am (W.S.T.)					

(E.S.T.) Eastern Standard Time (W.S.T.) Western Standard Time
(C.S.T.) Central Standard Time

FARES

FROM SYDNEY TO	First Class Inclusive*		Economy Class Inclusive*		Coach Class Seats**	
	ADULT	HALF	ADULT	HALF	ADULT	HALF
Adelaide	295.00	195.50	210.00	144.45	90.00	65.50
Kalgoorlie	693.00	445.50	514.00	339.00	200.00	175.00
Perth	835.00	538.50	610.00	400.50	200.00	175.00
Adelaide to Perth	540.00	343.00	400.00	256.00	150.00	120.00

* Includes Sleeping Berths and all Meals.

** Only available ex Sydney (Monday and Thursday) and ex Perth (Sunday and Thursday).



Indian-Pacific — between Perth and Kalgoorlie

TRAVEL FACILITIES AND SERVICES "THE INDIAN PACIFIC"

SLEEPING BERTHS: These are provided for both First and Economy Class travel.

FIRST CLASS DELUX: This is a spacious compartment containing a three-quarter bed and an upper sleeping berth, ensuite shower and toilet, washbasin, hot and cold water, lounge chairs, wardrobes, vanity mirrors, power point (240 volt A.C.), towels, bedding and reading lights. (Compartment fee \$176.00 — 3 nights minimum — 2 Adults First Class Passengers.)

FIRST CLASS ROOMETTES: Consist of single-berth compartments each containing a wardrobe, washbasin, hot and cold water, towel, power point (240 volt A.C.), toilet facilities and bedding. NOTE: There is no single supplement charge for roomettes.

FIRST CLASS TWINETTES: Consist of two-berth compartments each containing two wardrobes, ensuite shower and toilet, washbasin, hot and cold water, vanity mirrors, power point (240 volt A.C.), towels, bedding and reading light.

ECONOMY CLASS TWINETTES: Consist of two-berth compartments offering similar facilities for two people as the one person First Class roomettes. Showers and toilets are located at the end of the sleeping car.

SITTING CARS: (COACH CLASS) Have been constructed as open saloon cars with overhead luggage racks and individual reading lights. Each seat may be reclined to the desired position by pressing a button in the armrest. Showers and toilets are provided at the end of the car. NOTE: Coach Class fares do not include the use of the Dining Car or Lounge Car.

DINING CAR SERVICE: A Dining Car, available to all sleeping car passengers, is attached to The Indian Pacific from where liquor and full meal service is available. For sleeping car passengers all meals are included in the fare. For Coach Class passengers a Buffet Car provides A-La-Carte meals from a comprehensive menu.

LOUNGE CAR: The Indian Pacific has a First Class Lounge Car and an Economy Class Lounge Car for the exclusive use of First Class and Economy Class passengers respectively from which a wide range of wines, spirits, beers and soft drinks are available.

PASSENGER'S LUGGAGE: Is conveyed free of charge up to 80kg irrespective of the class of travel bearing in mind that space in the roomettes is limited. Luggage will be accepted up to 30 minutes prior to departure.

RESERVATIONS: Sleeper or seat reservations may be made 12 months in advance. Smoking or non-smoking accommodation may be nominated in both sleeping and sitting cars.

CONCESSIONAL FARES: Half fares apply to:

CHILDREN: Four years and under sixteen years of age. A child under 4 years occupying a seat also pays half fare.

STUDENTS: Sixteen years and over in possession of a current Railways of Australia Student Identification Card.

PENSIONERS: Presenting a current Pensioner Health Benefit Card.

NOTE: Students and Pensioners must carry their Identification or Health Benefit Cards on the train.

CAPER FARES: Special advance purchase fares are available to full fare paying passengers. Caper Fares do not apply to Coach Class travel. Plan ahead and save up to 30%. Please ask for details when booking.

TRAVEL RESTRICTIONS: A break in journey is permitted at any station enroute for:

SINGLE TICKETS: The journey must be commenced on the date stamped on the ticket and be completed within two months.

RETURN TICKETS: The forward journey is the same as for a single ticket. The return journey must be completed within six months.

NOTES: A break of journey is not permitted for Coach Class travel.

RECONFIRMATION: Passengers are requested to reconfirm their reservation 24 hours prior to the train's departure.

CANCELLATION: If travel is unable to be undertaken after the tickets have been issued cancellation fees may apply. Therefore it is imperative that unwanted reservations be cancelled promptly.

MOTORRAIL: Motor vehicles and trailers plus their contents are conveyed at the owner's risk on the Indian Pacific between Sydney and Adelaide and between Adelaide and Perth or vice versa. Vehicles conveyed on the Indian Pacific between Sydney and Perth or vice versa are unloaded at Adelaide, stored in a security compound then reloaded and conveyed on the next service. Please ask for full details including loading times and restrictions.

MOTORRAIL RATES:

EACH VEHICLE	SYDNEY - PERTH	ADELAIDE - PERTH
Not exceeding 5.5m	430.00	270.00
Exceeding 5.5m up to 8.2m	565.00	405.00

ADELAIDE TO PERTH				PERTH TO ADELAIDE			
Km from Adelaide			Wed and Sat	Km from Perth			Wed and Sat
-	Adelaide.....	DEP	4.45pm (C.S.T.)	-	Perth.....	DEP	9.00pm (W.S.T.)
222	Coonamia.....	ARR	7.55				Thur and Sun
		DEP	8.05				6.00am
312	Port Augusta.....	ARR	9.45	659	Kalgoorlie.....	ARR	6.30am (W.S.T.)
		DEP	10.00			DEP	5.36pm (W.S.T.)
			Thur and Sun	1527	Cook.....	ARR	Alter watches forward 90 min.
1134	Cook.....	ARR	10.50am (C.S.T.)			DEP	8.10pm (C.S.T.)
			Alter watches back 90 min.				Fri and Mon
			9.45 (W.S.T.)				8.51am
2002	Cook.....	DEP	8.35pm (W.S.T.)	2349	Port Augusta.....	ARR	9.05
		DEP	9.00pm			DEP	10.26
2661	Perth.....	ARR	7.00am (W.S.T.)	2439	Coonamia.....	ARR	10.30
			Fri and Mon			DEP	1.50pm (C.S.T.)
				2661	Adelaide.....	ARR	

(C.S.T.) Central Standard Time
(W.S.T.) Western Standard Time



Dining Car



Lounge Car



The "Trans Australian" at Yorkey's Crossing, SA.

FARES

FROM ADELAIDE TO	First Class Inclusive*		Economy Class Inclusive*		Coach Class Seats	
	ADULT	HALF	ADULT	HALF	ADULT	HALF
Kalgoorlie	399.00	250.50	302.00	193.50	150.00	108.05
Perth	540.00	343.00	400.00	256.00	150.00	120.00

* Includes Sleeping Berths and all Meals.

TRAVEL FACILITIES AND SERVICES "THE TRANS AUSTRALIAN"

SLEEPING BERTHS: These are provided for both First and Economy Class travel.

FIRST CLASS ROOMETTES: Consist of single-berth compartments each containing a wardrobe, washbasin, hot and cold water, towel, power point (240 volt A.C.), toilet facilities and bedding. NOTE: There is no single supplement charge for roomettes.

FIRST CLASS TWINETTES: Consist of two-berth compartments each containing two wardrobes, ensuite shower and toilet, washbasin, hot and cold water, vanity mirrors, power point (240 volt A.C.), towels, bedding and reading light.

ECONOMY CLASS TWINETTES: Consist of two-berth compartments offering similar facilities for two people as the one person first class roomettes. Showers and toilets are located at the end of the sleeping car.

SITTING CARS: (COACH CLASS) Have been constructed as open saloon cars with overhead luggage racks and individual reading lights. Each seat may be reclined to the desired position by pressing a button in the armrest. Showers and toilets are provided at the end of the car. NOTE: Coach Class fares do not include the use of the Dining Car or Lounge Cars.

DINING CAR SERVICE: A Dining Car, available to all sleeping car passengers, is attached to The Trans Australian from where liquor and full meal service is available. For sleeping car passengers all meals are included in the fare. For Coach Class passengers a Buffet Car provides A-La-Carte meals from a comprehensive menu.

LOUNGE CAR: The Trans Australian has a First Class Lounge Car and an Economy Class Lounge Car for the exclusive use of First Class and Economy Class sleeping car passengers respectively from which a wide range of wines, spirits, beers and soft drinks are available.

PASSENGER'S LUGGAGE: Is conveyed free of charge up to 80kg irrespective of the class of travel bearing in mind that space in the roomettes is limited. Luggage will be accepted up to 30 minutes prior to departure.

RESERVATIONS: Sleeper or seat reservations may be made 12 months in advance. Smoking or non-smoking accommodation may be nominated in both sleeping and sitting cars.

CONCESSIONAL FARES: Half fares apply to:

CHILDREN: Four years and under sixteen years of age. A child under 4 years occupying a seat also pays half fare.

STUDENTS: Sixteen years and over in possession of a current Railways of Australia Student Identification Card.

PENSIONERS: Presenting a current Pensioner Health Benefit Card.

NOTE: Students and Pensioners must carry their Identification or Health Benefit Cards on the train.

CAPER FARES: Special advance purchase fares are available to full fare paying passengers. Plan ahead and save up to 30%. Please ask for details when booking.

TRAVEL RESTRICTIONS: A break in journey is permitted at any station enroute for:

SINGLE TICKETS: The journey must be commenced on the date stamped on the ticket and be completed within two months.

RETURN TICKETS: The forward journey is the same as for a single ticket. The return journey must be completed within six months.

RECONFIRMATION: Passengers are requested to reconfirm their reservation 24 hours prior to the train's departure.

CANCELLATION: If travel is unable to be undertaken after the tickets have been issued cancellation fees may apply. Therefore it is imperative that unwanted reservations be cancelled promptly.

MOTORRAIL: Motor vehicles, caravans and trailers plus their contents are conveyed at the owner's risk between Adelaide or Port Augusta to Perth or vice versa. Unaccompanied vehicles are not accepted on The Trans Australian. Please ask for full details including loading times.

MOTORRAIL RATES

EACH VEHICLE	EX ADELAIDE	EX PORT AUGUSTA
Not exceeding 5.5m	\$270.00	\$250.00
Exceeding 5.5m up to 8.2m	\$405.00	\$375.00

MELBOURNE - CANBERRA

Km from Melbourne		Intercapital Daylight Mon to Sat	Intercity Train Mon to Fri	Intercity Train Sat	Intercity Train Sun
	Melbourne (Spencer Street) DEP	8.40am	12.00 noon	8.10am	9.50am
301	Wodonga ARR		3.36pm +	11.44+	1.24pm +
	DEP		3.40	11.55	1.40
317	Albury ARR	12.20pm	-	-	-
	DEP	12.35	-	-	-
646	Yass Junction ARR	5.01	-	-	-
	DEP	5.15	-	-	-
	Change to Road Coach*				
843	Yass Junction DEP	5.15	-	-	-
	Canberra (Jolimont Centre) ARR	6.12pm	8.40	4.55	6.40
	Canberra (Railway Station) ARR	-	8.55pm	5.10pm	6.55pm

Km from Canberra		V/Line Road Coach Mon to Fri	Road Coach* Mon to Sat	V/Line Road Coach Sat	V/Line Road Coach Sun
-	Canberra (Railway Station) DEP	7.00am	-	10.30am	11.50am
	Canberra (Jolimont Centre) DEP	7.20	10.45am	10.55	12.15
197	Yass Junction ARR	-	11.45§	-	-
	DEP	-	12.11pm	-	-
526	Wodonga ARR	12.25pm x	-	4.00pm x	4.45pm x
	DEP	12.48	-	4.18	5.03
542	Albury ARR	-	4.40	-	-
	DEP	-	4.48	-	-
843	Melbourne (Spencer Street) ARR	4.05pm	8.20pm	7.45pm	8.39pm

SYDNEY - CANBERRA

Km from Sydney		Passenger Train Daily	Intercapital Daylight Mon to Sat	Riverina XPT Daily	Passenger Train Daily
-	Sydney DEP	7.05am	7.45am	12.40pm	5.05pm
12	Strathfield DEP	7.19	7.57	12.51	5.17
51	Campbelltown DEP	8.03	8.36	1.22	5.57
143	Mossvale DEP	9.19	9.56	2.23	7.20
222	Goulburn ARR	10.11	10.48	3.13	8.33
	DEP	10.14	10.51	3.16	8.36
315	Yass Junction ARR	-	12.05pm	4.18	-
	DEP	-	12.25	4.55	-
	Change to Road Coach†				
	Mon to Fri			Mon to Sat and Public Holidays	
318	Yass Junction DEP	-	12.25	4.55	-
	Queanbeyan DEP	11.44	-	-	10.09
326	Canberra ARR	12.05pm	1.25pm	5.50pm	10.30pm

Km from Canberra		Passenger Train Daily	Road Coach† Mon to Sat & Public Holidays	Passenger Train Daily
-	Canberra DEP	6.05am	9.30am	12.45pm
8	Queanbeyan DEP	6.14	-	12.54
11	Yass Junction ARR	-	10.30am	-
	DEP	-	11.06	-
	Change to Riverina XPT Daily			
104	Yass Junction DEP	-	11.06	-
	Goulburn ARR	7.44	12.12pm	2.25
	DEP	7.47	12.14	2.28
183	Mossvale DEP	8.59	1.02	3.31
275	Campbelltown DEP	10.33	2.10	4.51
314	Strathfield DEP	11.07	2.24	5.36
326	Sydney ARR	11.23am	2.57pm	5.55pm

FARES

FROM MELBOURNE TO	Canberra Link* Economy Class SINGLE	Canberra Link (I) First Class SINGLE	Intercapital Daylight** Economy Class SINGLE	Intercapital Daylight** First Class SINGLE
Wodonga	25.00	35.00	25.00	35.00
Albury	-	-	26.20	36.80
Yass Junction	-	-	54.20	76.20
Canberra	41.00	51.00	-	-

* One ticket will cover reservations for both the V/Line Intercity Train and Road Coach journeys.
 ** These fares are for rail travel only and do not include the bus fare from Yass Junction to Canberra.
 (I) First Class applies to the Melbourne - Wodonga rail sector only.

FROM SYDNEY TO	First Class SINGLE	First Class RETURN	Economy Class SINGLE	Economy Class RETURN
Goulburn	26.90	53.80	19.90	38.20
Yass Junction	39.10	78.20	27.70	55.40
Queanbeyan	39.10	78.20	27.70	55.40
Canberra†	39.10	78.20	27.70	55.40
Brisbane-Goulburn (via Kyogle)	146.90	293.80	104.10	208.20
Brisbane-Yass Junction (via Kyogle)	159.10	318.20	112.70	225.40
Brisbane - Canberra (via Kyogle)	159.10	318.20	112.70	225.40

The above are Sit-up fares and do not include Sleeping berth fees.

† These fares are for Rail travel only and do not include the Bus fare to and from Yass Junction and Canberra if Rail travel is by way of the Intercapital Daylight Express or the Riverina XPT.

TRAVEL FACILITIES AND SERVICES

SITTING CARS: (First and Economy) Have been constructed as open saloon cars with overhead luggage racks and individual reading lights. Each seat may be reclined to the desired position by pressing a button in the armrest.

BUFFET SERVICE: A Buffet Car, available to all passengers, is attached to the Intercapital Daylight Express where light meals, refreshments and liquor can be purchased.

SNACK BAR SERVICE: Take-away food, liquor and beverages are available.

ROAD COACHES: (V/Line) Provide one class accommodation and are fully airconditioned with reclining seats. Smoking and the consumption of liquor is not permitted.

PASSENGER'S LUGGAGE: Is conveyed free of charge up to 80kg irrespective of the class of travel. Luggage will be accepted up to 30 minutes prior to departure.

RESERVATIONS: V/Line Seat reservations for Interstate journeys may be made 12 months in advance. Smoking or non-smoking accommodation may be nominated in both the V/Line Intercity trains and the Intercapital Daylight.

New South Wales State Rail Authority First or Economy Class Seat reservations may only be made one calendar month in advance of date of travel. Please refer to the New South Wales State Rail Authority Timetables for travel restrictions concerning intermediate journeys.

CONCESSIONAL FARES: Half fares apply to:

CHILDREN: Four years and under sixteen years of age. A child under 4 years occupying a seat also pays half fare.

STUDENTS: Sixteen years and over in possession of a current Railways of Australia Student Identification Card.

PENSIONERS: Presenting a current Pensioners Health Benefit Card.

NOTE: Students and Pensioners must carry their Identification or Health Benefit Cards on the trains.

TRAVEL RESTRICTIONS: A break in journey is permitted at any station enroute for:

SINGLE TICKETS: The journey must be commenced on the date stamped on the ticket and be completed within two months.

RETURN TICKETS: The forward journey is the same as for a single ticket. The return journey must be completed within six months.

RECONFIRMATION: Passengers are requested to reconfirm their reservation 24 hours prior to the departure of the train.

CANCELLATION: If travel is unable to be undertaken after the tickets have been issued cancellation fees may apply. Therefore it is imperative that unwanted reservations be cancelled promptly.

NOTES TO TABLES

* The privately operated Road Coach travels between Yass Junction Railway Station and the Canberra Government Tourist Bureau (Jolimont Centre). Reservations are only necessary from Canberra to Yass Junction and all fares are payable to the Coach Driver.

+ Change to V/Line Road Coach Service.

x Change to V/Line Intercity Train.

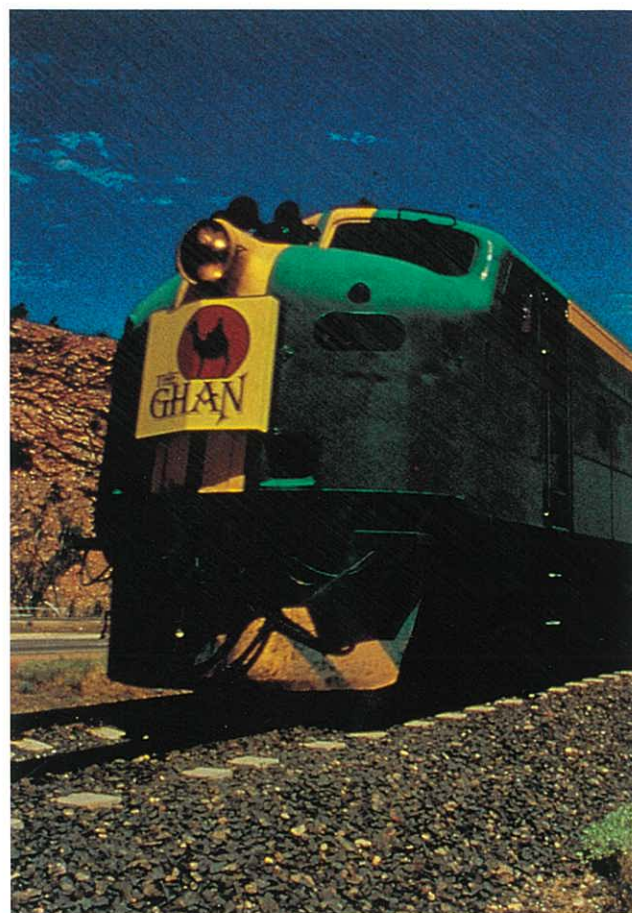
§ Change to Intercapital Daylight Train.

ADELAIDE TO ALICE SPRINGS				ALICE SPRINGS TO ADELAIDE			
Km from Adelaide			Thur & Mon*	Km from Alice Springs			Fri & Tue*
-	Adelaide.....	DEP	2.00pm (C.S.T.)	-	Alice Springs.....	DEP	5.10pm (C.S.T.)
222	Coonamia**.....	ARR	5.00				Sat & Wed
		DEP	5.05	831	Tarcoola.....	ARR	4.10am (C.S.T.)
316	Port Augusta.....	ARR	6.25			DEP	5.00
		DEP	6.45	1243	Port Augusta.....	ARR	11.40
			Fri & Tue			DEP	11.50
728	Tarcoola.....	ARR	12.25am	1337	Coonamia**.....	ARR	1.12pm
		DEP	1.00			DEP	1.20
			Fri & Tue				Sat & Wed
1559	Alice Springs.....	ARR	11.40am (C.S.T.)	1559	Adelaide.....	ARR	4.30 (C.S.T.)

* Extra service (with Motorrail) operates between April and November departing Adelaide on Mondays and Alice Springs on Tuesdays.

** Connecting bus service Coonamia-Port Pirie-Coonamia is available for through passengers to and from Alice Springs.

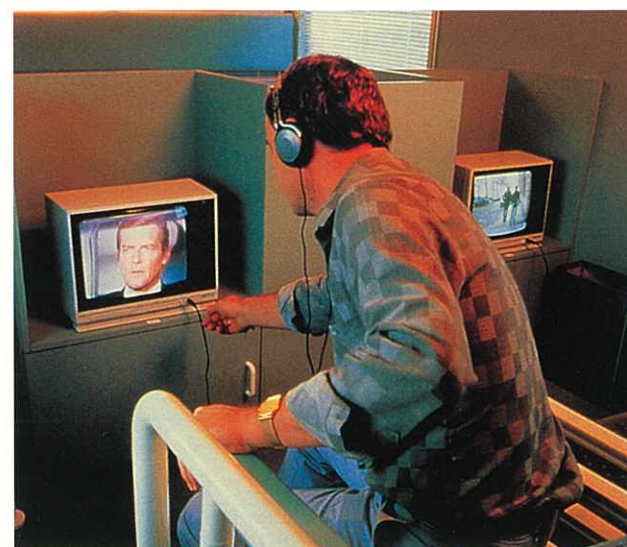
(C.S.T.) CENTRAL STANDARD TIME



The Ghan



Entertainment Car



Entertainment Car

FARES

FROM ALICE SPRINGS TO	First Class Inclusive*		Coach Class Seats	
	ADULT	HALF	ADULT	HALF
Port Augusta	279.70	179.35	121.00	66.90
Adelaide	360.00	223.50	121.00	83.85

* Includes First Class sleeping berths plus meals on The Ghan.

TRAVEL FACILITIES AND SERVICES "THE GHAN"

SLEEPING BERTHS: These are provided for First Class travel only.

FIRST CLASS ROOMETTES: Consist of single-berth compartments each containing a wardrobe, washbasin, hot and cold water, towel, power point (240 volt A.C.), toilet facilities and bedding. NOTE: There is no single supplement charge for roomettes.

FIRST CLASS TWINETTES: Consist of two-berth compartments each containing two wardrobes, ensuite shower and toilet, washbasin, hot and cold water, vanity mirrors, power point (240 volt A.C.), towels, bedding and reading lights.

SITTING CARS: (COACH CLASS) have been constructed as open saloon cars with overhead luggage racks and individual reading lights. Each seat may be reclined to the desired position by pressing a button in the armrest. Showers and toilets are provided at the end of the car. NOTE: Coach Class fares do not include the use of the First Class Dining, Car or Lounge Cars.

DINING CAR SERVICE: A Dining Car, available to First Class passengers only, is attached to The Ghan from where liquor and a full meal service is available. For First Class passengers all meals are included in the fare. For Coach Class passengers a second Dining Car is provided from which take-away style food can be purchased.

LOUNGE CAR: The Ghan has two First Class Lounge Cars for the exclusive use of First Class passengers from which a wide range of wines, spirits, beers and soft drinks are available. A piano and video TV is also provided for passengers' use.

ENTERTAINMENT CAR: This car provides fun and entertainment for all passengers. It has a bookshop, hairdressing salon, games room complete with poker machines, electronic games and video monitors. Souvenirs and playing cards are available for purchase.

PASSENGER'S LUGGAGE: Is conveyed free of charge up to 80kg irrespective of the class of travel bearing in mind that space in the roomettes is limited. Luggage will be accepted up to 30 minutes prior to departure.

RESERVATIONS: Sleeper or seat reservations may be made 12 months in advance. Smoking or non-smoking accommodation may be nominated in both sleeping and sitting cars.

CONCESSIONAL FARES: Half fares apply to:

CHILDREN: Four years and under sixteen years of age. A child under 4 years occupying a seat also pays half fare.

STUDENTS: Sixteen years and over in possession of a current Railways of Australia Student Identification Card.

PENSIONERS: Presenting a current Pensioner Health Benefit Card.

NOTE: Students and Pensioners must carry their Identification or Health Benefit Cards on the train.

CAPER FARES: Special advance purchase fares are available to full fare paying passengers. Plan ahead and save up to 30%. Please ask for details when booking.

TRAVEL RESTRICTIONS: A break in journey is permitted at any station enroute for:

SINGLE TICKETS: The journey must be commenced on the date stamped on the ticket and be completed within two months.

RETURN TICKETS: The forward journey is the same as for a single ticket. The return journey must be completed within six months.

RECONFIRMATION: Passengers are requested to reconfirm their reservations 24 hours prior to the train's departure.

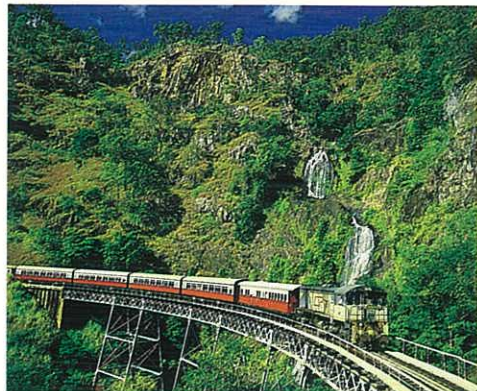
CANCELLATION: If travel is unable to be undertaken after the tickets have been issued cancellation fees may apply. Therefore it is imperative that unwanted reservations be cancelled promptly.

MOTORRAIL: Motor vehicles, caravans and trailers plus their contents are conveyed at the owner's risk between Adelaide or Port Augusta to Alice Springs or vice versa. Unaccompanied vehicles are not accepted on The Ghan. Please ask for full details including loading times.

MOTORRAIL RATES

EACH VEHICLE	EX ADELAIDE	EX PORT AUGUSTA
Not exceeding 5.5m (CAR ONLY)	180.00	170.00
Not exceeding 5.5m (TRAILER OR CARAVAN INC. TOWBAR)	310.00	280.00
Exceeding 5.5m up to 8.2m	440.00	410.00

WORRY ABOUT WHAT TO SEE



RATHER THAN WHAT IT WILL COST

Queensland holds many attractions for holiday-makers. That's why Queensland Railways believe the only worries you should have when travelling in the Sunshine State is deciding what to see — not what you can afford to see.

Queensland Railways Traveltrain is the truly cost-efficient way to travel throughout our beautiful state. But we don't spare any cost in providing for your total comfort and convenience.

Air-conditioning, fine food, MotorRail, personal service, stylish berths and quality facilities are just some of the features that add value to your holiday dollar. Plus all our Traveltrains are set to the back-drop of Queensland's spectacular scenery.

Queensland Railways operates nine Traveltrains and Tourist Trains.

THE QUEENSLANDER: The "Classic" Traveltrain adventure. Sleeping berths, sitting cars, Dining Car, Club Car, MotorRail, showers, Lounge Car. One service weekly. Brisbane-Cairns and return.

SUNLANDER: Sleeping berths, sitting cars, Dining Car, Club Car, showers. Three services weekly. Brisbane-Cairns and return.

SPIRIT OF CAPRICORN: The newest and most modern Traveltrain. Daylight service. Sitting cars, electric traction, refreshments. Daily. Brisbane-Rockhampton and return.

CAPRICORNIAN: Overnight service. Sleeping berths, sitting cars, Club Car, showers. Three services weekly. Brisbane-Rockhampton and return.

INLANDER: Sleeping berths, sitting cars, Food Bar Car, showers. Two services weekly. Townsville-Mt Isa and return.

MIDLANDER: Sleeping berths, sitting cars, Food Bar Car, showers. Two services weekly. Rockhampton-Winton and return.

WESTLANDER: Sleeping berths, sitting cars, Food Bar Car, showers. Two services weekly. Brisbane-Cunnamulla/Quilpie and return.

GULFLANDER: A fascinating four hour journey through the Gulf Country. One service weekly. Normanton-Croydon and return.

CAIRNS-KURANDA: 34 kilometres of scenic rainforest and mountain adventure. Average speed 17 km/h. Daily.

Book your affordable Queensland Railways Traveltrain adventure now by phoning (07) 235 1122.

TAKE IT EASY. TAKE A  TRAVELTRAIN.

DEPARTMENT OF TRANSPORT

305 Edward Street, Brisbane. Q. 4000 Phone: (07) 235 1122

S. R. Hampson, Government Printer

KCA 2949

WE'RE PROUD TO CALL IT OUR FLAGTRAIN...



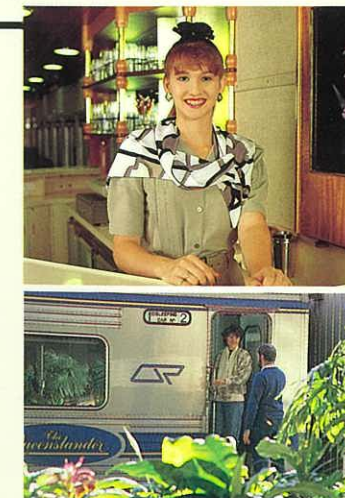
WE MEAN FLAGSHIP.

The Queenslander

Queensland Railways' fleet of Traveltrains is headed up by a very special train — The Queenslander.

Following the Sunshine Route between Brisbane and Cairns, The Queenslander is the ideal way to see some of our state's most beautiful scenery from the comfort of first-class facilities.

Fine food, personal service and stylish berths are just some of the features that will make your classic journey on The Queenslander totally relaxing and enjoyable.



An added bonus of The Queenslander is the MotorRail service, which allows you to take your car without doing the driving. This way your holiday gets off to a fresh start and you still have your car for sightseeing.

Take it easy. Take a  **Traveltrain**

Your ticket to Queensland adventures.

305 Edward Street, Brisbane, Q. 4000. Phone: (07) 235 1122

NORMANTON TO CROYDON

Km from Normanton		Wednesday
-	Normanton.....	DEP 8.30am
17	Clarina.....	DEP 8.57
22	Glenore.....	DEP 9.05
62	Haydon.....	DEP 10.05
78	R.M. Stop No. 1.....	DEP 10.32
91	Blackbull.....	DEP 10.55
152	Croydon.....	ARR 12.30pm

CROYDON TO NORMANTON

Km from Croydon		Thursday
-	Croydon.....	DEP 8.30am
60	Blackbull.....	DEP 10.05
74	R.M. Stop No. 1.....	DEP 10.28
90	Haydon.....	DEP 10.55
130	Glenore.....	DEP 11.55
135	Clarina.....	DEP 12.03pm
152	Normanton.....	ARR 12.30pm

FARES

SINGLE FARE	
Normanton to Croydon	\$21.00
SPECIAL RETURN FARES BETWEEN NORMANTON AND CROYDON	
Adult	\$38.00
Child, Pensioner, Student	\$19.00
Family (2 Adults & 2 Children)	\$95.00
NORMANTON AND GLENORE	
Adult	\$12.00
Child, Pensioner, Student	\$6.00
MOTORRAIL BETWEEN NORMANTON AND CROYDON	
Motor Vehicle	\$66.00
Motor Vehicle and Caravan	\$121.00*
Motor Vehicle and Trailer	\$94.00*
Motor Cycle	\$28.00
Caravan	\$66.00
Trailer	\$39.00

* Only applies when loaded on the same wagon. If loaded on separate wagons, the single unit rate will apply. The above are accompanied rates only.

FEATURING

- Vintage railmotor and trailer accommodating a maximum of 59 seated passengers.
- The Gulflander is available for charter.
- Seats often available to the public on days the service is under charter.

• For reservations contact: Normanton Railway
PO Box 270
NORMANTON Q 4890
PHONE: (077) 45 1391

ECONOMY CLASS SEATS ONLY



Normanton Station



Service with a smile



Gulflander between Normanton and Croydon

CAIRNS TO KURANDA

Km from Cairns		Daily	Sun to Fri
-	Cairns.....	DEP 8.30am	9.30am
10	Freshwater.....	DEP 8.50	-
12	Redlynch.....	DEP 8.56	9.56
23	Stoney Creek.....	DEP 9.24	10.26
31	Barron Falls.....	ARR 9.48	10.48
		DEP 9.55	10.55
33	Kuranda.....	ARR 10.00am	11.00am

KURANDA TO CAIRNS

Km from Kuranda		Sun to Fri	Daily
-	Kuranda.....	DEP 2.00pm	3.15pm
2	Barron Falls.....	ARR 2.05	3.20
		DEP 2.10	3.25
10	Stoney Creek.....	DEP 2.32	3.47
21	Redlynch.....	DEP 3.00	4.15
23	Freshwater.....	DEP 3.06	4.21
33	Cairns.....	ARR 3.25pm	4.40pm

This timetable is effective from 4 June 1990 to 30 September 1990. The Kuranda Tourist Train operates daily except Christmas Day and timetables vary due to seasonal demand.

FARE SCHEDULE

	SINGLE	RETURN
ADULT	\$11.20	\$19.20
CHILD	5.60	9.60
FAMILY SPECIAL*	25.30	50.60

* This includes 2 Adults and 2 Children.

Each additional Child:— \$4.20 SINGLE \$8.40 RETURN



Charm and beauty of the Cairns-Kuranda Tourist Train

